

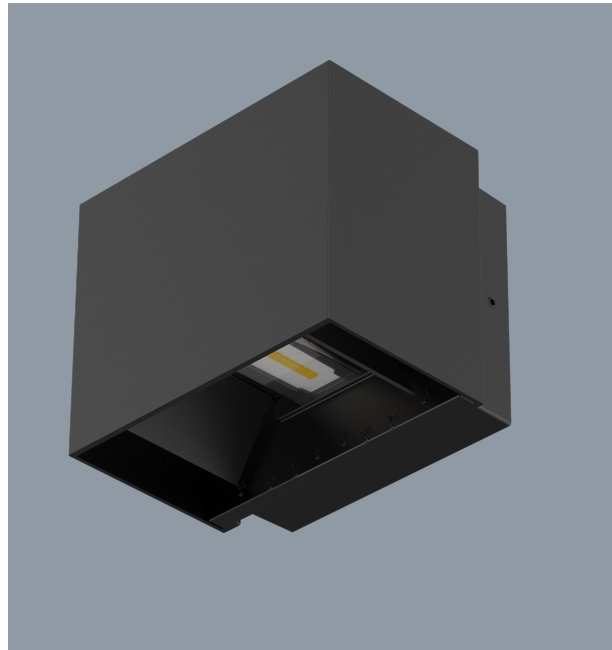


CUBE II S9320 - 10W

LED 10 watt IP65 surface mounted CUBE wall luminaire

Design Specifications

- Durable aluminium body profile, colour white or black
- Quality powder coat finish
- High efficiency SMD LED chips
- Independent up & down beam angle adjustable from 0° to 60°
- Integral constant current non-dimmable LED driver
- Indirect illumination optical performance



Technical Specification

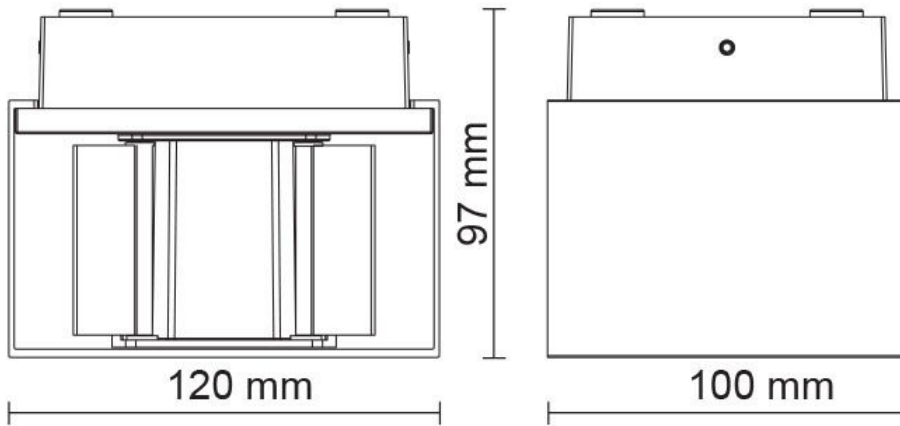
Model No.	Description	Input Voltage (V/AC)	Power (W)	Lumens (lm)	CCT (K)	CRI
S9320WW/WH	10W LED W/L 3000K WH	240	10	750	3000	80
S9320WW/BK	10W LED W/L 3000K BK	240	10	750	3000	80
S9320NDL/WH	10W LED W/L 5000K WH	240	10	900	5000	80
S9320NDL/BK	10W LED W/L 5000K BK	240	10	900	5000	80

Technical Specification

Model No.	Beam Angle (°)	Dimmable	Dim (mm)	Body Colour
S9320WW/WH	60	NO	120(W) x 100(H)	WHITE
S9320WW/BK	60	NO	120(W) x 100(H)	BLACK
S9320NDL/WH	60	NO	120(W) x 100(H)	WHITE
S9320NDL/BK	60	NO	120(W) x 100(H)	BLACK

Due to continued product and technology enhancements, data sourced from sal.net.au shall not form part of any contract and or technical performance guarantee unless expressly confirmed in writing by SAL at the time of order. Products are sold in accordance with [SAL Terms and Conditions of sale](#) and all images shown are for illustration purposes only and may vary from the actual colour or finish. Unless specifically stated, all IP ratings nominated for Interior products are from "below the ceiling".

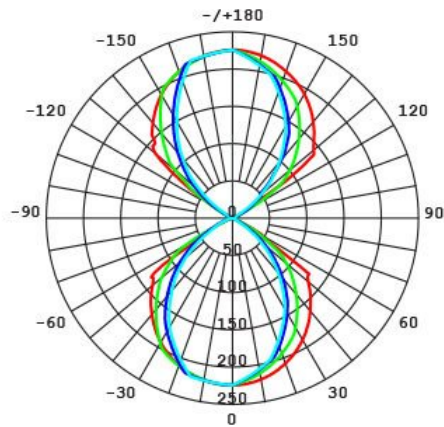
Dimensions



Photometric Data

Unit: cd C0/C180 _____ C30/C210 _____
 cd C60/C240 _____ C90/C270 _____

S9320WW at 3000K





Product Images

