



ANOVA S9105ST - 4W

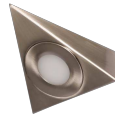
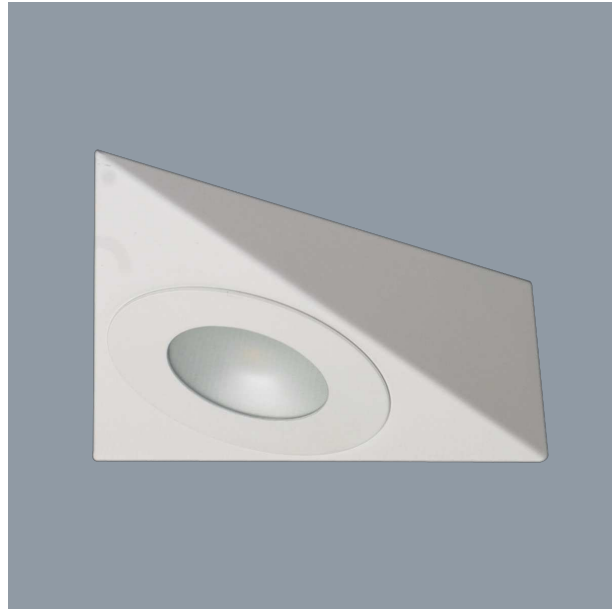
Compact 4 watt surface mount LED cabinet luminaire

Application

Residential and commercial features

Design Specifications

- Durable die-cast aluminium body profile
- Quality white powder coat or satin nickel plated finish
- High efficiency LED chips
- Low profile design
- Suitable drivers - PLUTO EGL 12V/6W, PLUTO 15DV, 30DV, 50DV,
- 12V DC driver required



Technical Specification

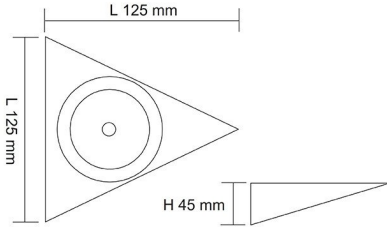
Model No.	Input Voltage (V/DC)	Power (W)	Lumens (lm)	CCT (K)	CRI	Beam Angle (°)
S9105WW ST/WH	12	4	280	3000	80	90
S9105DL ST/WH	12	4	280	6000	80	90
S9105WW ST/SN	12	4	280	3000	80	90
S9105DL ST/SN	12	4	280	6000	80	90

Model No.	Dimmable	Dim (mm)	Body Colour
S9105WW ST/WH	NO	125(L) x 125(W) x 45(H)	WHITE
S9105DL ST/WH	NO	125(L) x 125(W) x 45(H)	WHITE
S9105WW ST/SN	NO	125(L) x 125(W) x 45(H)	SATIN NICKEL
S9105DL ST/SN	NO	125(L) x 125(W) x 45(H)	SATIN NICKEL

Due to continued product and technology enhancements, data sourced from sal.net.au shall not form part of any contract and or technical performance guarantee unless expressly confirmed in writing by SAL at the time of order. Products are sold in accordance with [SAL Terms and Conditions of sale](#) and all images shown are for illustration purposes only and may vary from the actual colour or finish. Unless specifically stated, all IP ratings nominated for Interior products are from "below the ceiling".

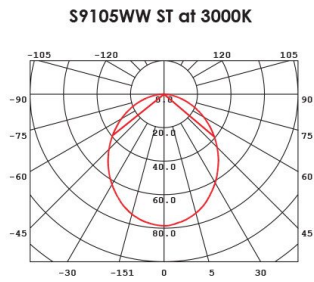
Dimensions

S9105 ST



Photometric Data

Unit: cd C0/C180 — C90/C270 —





PIXIE AMBIENCE, CHANGE YOUR COLOUR TO MATCH YOUR STYLE.

The innovative PIXIE AMBIENCE SWITCH PLATES have been designed with the end user and installer in mind, allowing you to change the colour face plate as fashion demands.

For more
information
please
scan me

