



UFO SHB23MP200TC - 100/150/200

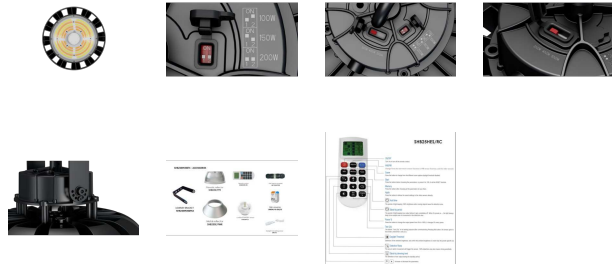
Dimmable, IP65 LED UFO highbay with selectable colour temperature and power.

Application

Super low profile dimmable LED highbay, ideal for commercial or industrial warehouse environments

Design Specifications

- Integral selectable power 100 / 150 or 200 watts
- Integral selectable colour temperature 3000 , 4000 or 5000K
- Robust, low profile die-cast aluminium IP65/IK08 body profile.
- High efficiency SMD LED chips, with an impressive > 140lm/W optical performance at 150W/4000K, CRI > 70, 90 degree beam distribution, polycarbonate lens
- Integral 1-10V dimmable LED driver, complete with flex and plug for easy installation, optional inline DALI signal converter, optional plug and play corridorSTANDBY sensor
- Power/lumen settings at **3000K** : 100W/13000lm, 150W/18000lm, 200W/22000lm, **4000K** : 100W/14500lm, 150W/21000lm, 200W/26000lm, **5000K** : 100W/14000lm, 150W/19500lm, 200W/24000lm.



Performance

Dimmable - **YES**
Dimmer Type - **1-10V, optional SAL DALI signal converter**

Technical Specification

Model No.	Input Voltage (V/AC)	Multiple Wattage	Lumens (lm)	CCT (K)	Beam Angle (°)	CRI
SHB23MP200TC	240	100/150/200	22000/26000/24000	3000/4000/5000	90	80
SHB23MP/CS						
SHB25HES/RC						
SHB23SE/PPR						

Model No.	Body Colour	Dim (mm)	Mass (kg)	IPART
SHB23MP200TC	BLACK	300(W) x 192(H)	2.8	YES
SHB23MP/CS	CORRIDOR SENSOR			
SHB25HES/RC	REMOTE CONTROL			
SHB23SE/PPR	PRISMATIC REFLECTOR			

Note: (1) 1-10V dimming does not provide 100% OFF dimming function. (2) lumens (lm) shown are displayed at the 200W **maximum power setting**

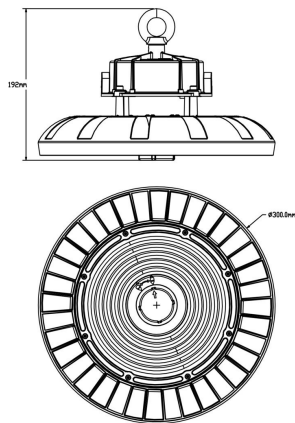
Note (1) : Sensor default settings: Sensitivity=100%, Hold Time=30mins, StandBy power=30%, StandBy time 30mins, Daylight Threshold=disabled

Note (2) : Sensor and dimming functions cannot be operated simultaneously

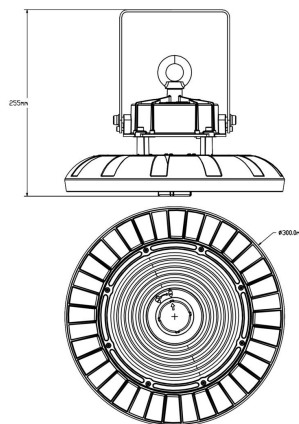
Due to continued product and technology enhancements, data sourced from sal.net.au shall not form part of any contract and or technical performance guarantee unless expressly confirmed in writing by SAL at the time of order. Products are sold in accordance with [SAL Terms and Conditions of sale](#) and all images shown are for illustration purposes only and may vary from the actual colour or finish. Unless specifically stated, all IP ratings nominated for Interior products are from "below the ceiling".

Dimensions

SHB23MP200TC



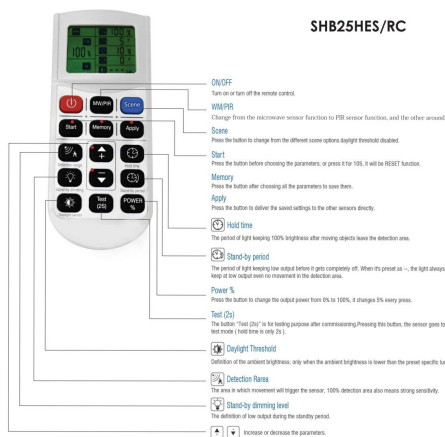
SHB23MP200TC WITH SHB23MP200PLB BRACKET



SHB23MP200TC - ACCESSORIES



SHB25HES/RC



THE NEW ESS106 IS SMALL IN SIZE BUT BIG ON FEATURES.



For more
information
please
scan me

