



LOUNGE II S9328/220TC - 15W

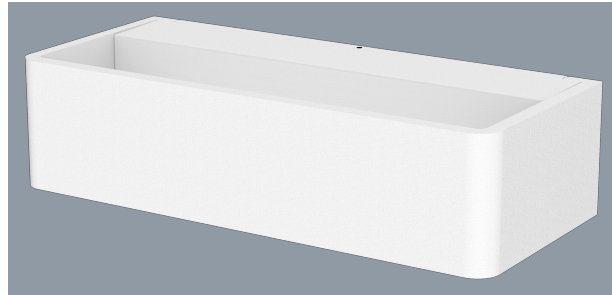
Decorative IP54 architectural LED wall mount luminaire

Application

A decorative architectural solution for residential, commercial interior or exterior spaces

Design Specifications

- Convenient TC selectable colour temperature, 3000 / 4000 / 5000K
- Durable white or black powder coated finish
- Integral control gear 15 watt
- Robust die-cast aluminium body profile
- High efficiency SMD LED
- Dimensions (LWH mm) : S9238/220TC 220 x 90 x 55



Technical Specification

Model No.	Description	Input (ac) (V)	Lumens (lm)	Body Colour
S9328/220TC/WH	LOUNGE II 15W/TC WH IP54	240	800/1000/900	WHITE
S9328/220TC/BK	LOUNGE II 15W/TC BK IP54	240	800/1000/900	BLACK