



product specification

www.oriel-lighting.com.au | quality lighting at affordable prices

BLING DIY

SKU:OL2567CH

Glass Crystal Drop DIY

Description

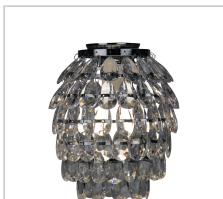
Add a touch of "Bling" to your room with this stylish and attractive chrome and faux crystal DIY fitting. The Bling is designed to fit straight onto an existing batten holder, using a standard bayonet globe. Best with a clear globe.

Additional information



Brand	Oriel Lighting
Colour	Chrome
Bulb Qty	1
Bulb Type	B22
Wattage	60W
Bulb Included	NO
Recommended Globe	A-LED-25104127
Voltage	240V
Overall Height	22
Overall Width	19
Overall Depth	19
Item Dimensions	D190 H220
Fitting Height	H220
Fitting Diameter	D190
Primary Material	ACRYLIC
Supplier Code	OL2567CH
UPI	9324879203524
DIY	A competent handy-person can DIY
Warranty / Guarantee	1 Year Replacement Guarantee

Images



Unless stated, fittings do not include globes (bulbs). No representations are made as to the suitability of this product for your application. All fixed lights (other than DIY lights) should be installed by a licensed electrical contractor. Due to continuing product development, some specifications may change over time. Refer to our detailed Terms and Conditions, online at: www.oriel-lighting.com.au | Details and specifications are current at the time of printing, and with constant product development, subject to change.

(c) Oriel Lighting