

AVOCA DC Series Installation Guide

Thanks for choosing our Avoca DC Series ceiling fan.

We strongly recommend that you read this manual carefully before installation.



Models Parameters (Fan Only):-

MADC133WWR	1320mm 3 Blade Ceiling Fan Matt White
MADC133MMR	1320mm 3 Blade Ceiling Fan Matt Black
MADC133WOR	1320mm 3 Blade Ceiling Fan Matt White/Oak

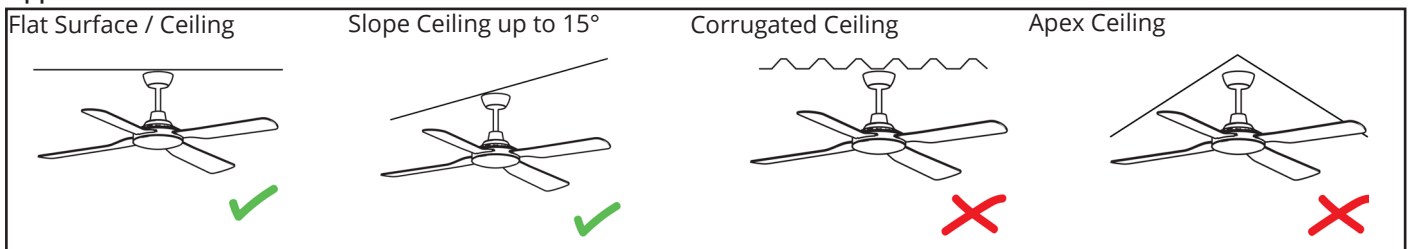
Models Parameters (Fan and LED Light):-

MADC1333WWR	1320mm 3 Blade Ceiling Fan Matt White with 20W LED Light
MADC1333MMR	1320mm 3 Blade Ceiling Fan Matt Black with 20W LED Light
MADC1333WOR	1320mm 3 Blade Ceiling Fan Matt White/Oak with 20W LED Light

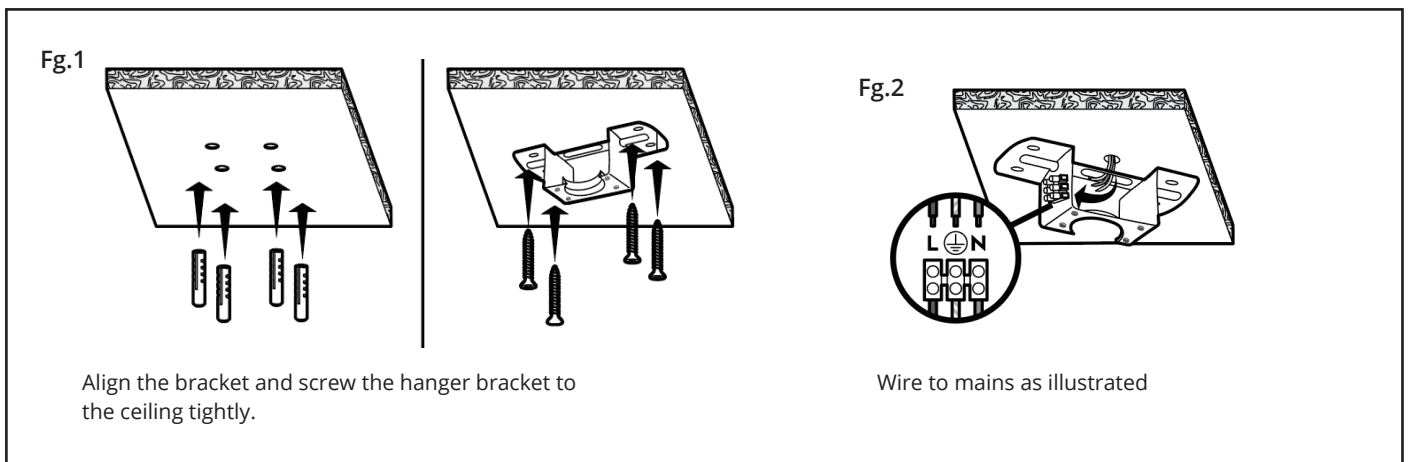
Part List:

Qty 1x motor assembly	Qty 1x instruction manual	Qty 1x screw kit	Qty 1x balancing kit
Qty 1x hanging bracket	Qty 1x wall control kit	Qty 3x blades	

Application



How to Assemble



WARNING Installation MUST carry out by a qualified and licensed electrician.

How to Install Blades

Fig.3 Fan only model

Attach the blade to the top of the motor using the 2 screws provided. Tighten the screws and repeat this procedure for all blades.

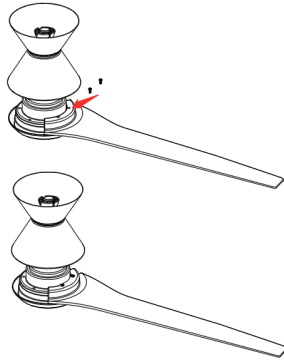
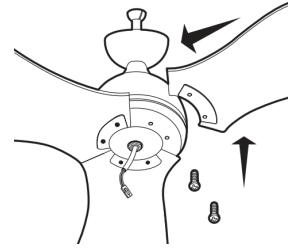


Fig.4 Fan LED Light Model

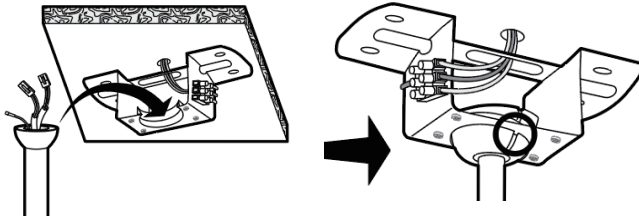
Attach the blade to the top of the motor using the 2 screws provided. Tighten the screws and repeat this procedure for all blades.



NB: Ensure the blades do not get damaged or bent during the installation process while the fan is on the ground. This will affect the performance and balance of the fan and this is NOT covered under warranty.

How to Install

Fig.5



Place fan into hanger bracket and align ball joint slot with hanger bracket as illustrated.

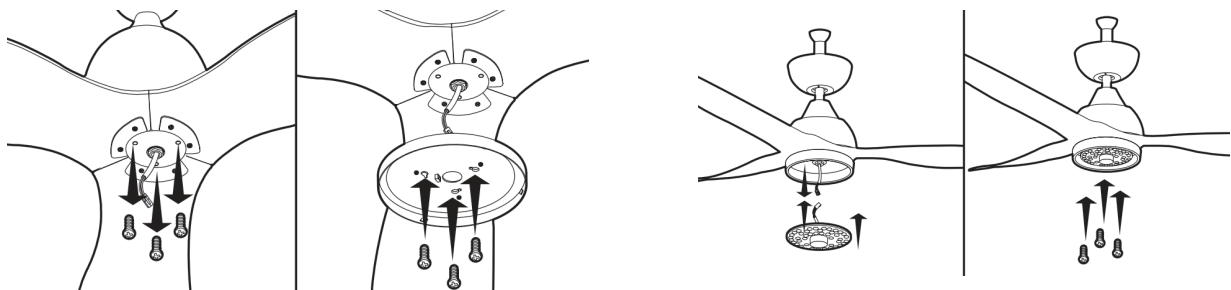
Fig.6



After wiring is completed, attach the canopy to the hanger bracket by pushing upwards and twisting anti-clockwise. Tighten screws and ensure canopy is not touching the ball joint.

How to Install Light Plate

Fig.7 Fan LED Light Model



Install the LED light kits as illustrated above.

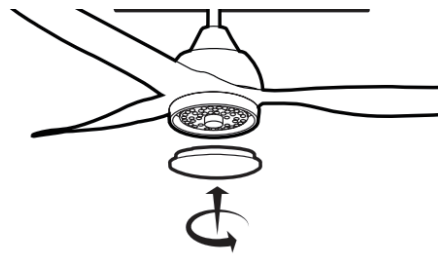
WARNING Installation **MUST** carry out by a qualified and licensed electrician.

How to Install / Remove the Cover

Fg.8 Fan Only Model

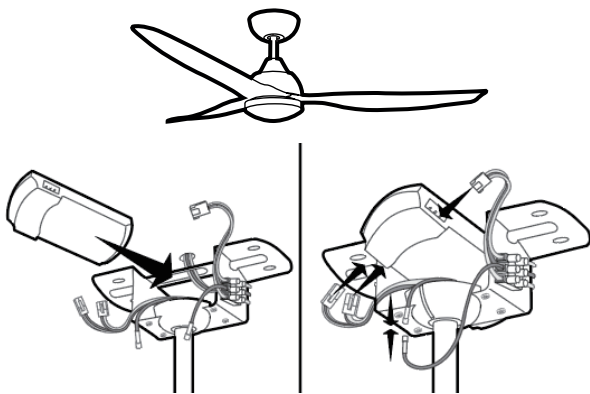
NB: There is no cover for Fan Only Model.

Fg.9 Fan LED Light Model



Align the convex point on the light plate with the gap on the LED mounting plate and press down firmly.

Installing Receiver Remote Control



Wire up the receiver with quick connectors and insert into the mounting bracket. Make sure the antenna wire has been safely folded inside the canopy cover before final assembly. (DO NOT cut the antenna wire)

Important Reminders

- Receiver must be correctly installed in the mounting bracket
- When the transmitter cannot control the receiver, please check
 - i) has sufficient battery in the transmitter
 - ii) any existence of similar remote controlled products nearby that cause interference
- Replace battery if getting low as this will affect sensitivity of the transmitter
- Take the battery out from the transmitter when leaving used for a long time to avoid battery leaks
- Isolation switch **MUST** be connected in the line

WARNING Installation **MUST** carry out by a qualified and licensed electrician.

WiFi / Remote Control Pairing

Fan only model

Pairing the remote control

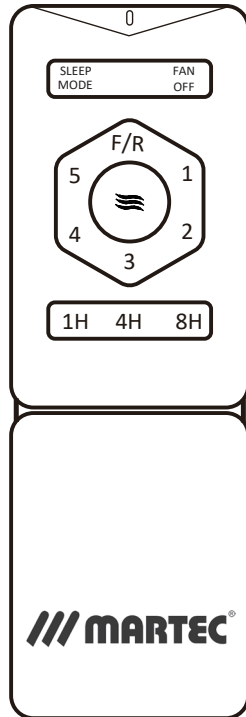
1. Turn on the ceiling fan.
2. Within the first 20 seconds, continue pressing the **FAN OFF** button until you hear a “beep” sound. ie. It is paired.

If you don't hear a “beep” sound, repeat step 1 and step 2 again.

Pairing the WiFi control

1. Turn on the ceiling fan.
2. Within the first 20 seconds, continue pressing the **SLEEP MODE** button until you hear a “beep” sound. ie. It is paired.

If you don't hear a “beep” sound, repeat step 1 and step 2 again.



FAN OFF: to switch off the fan.

SLEEP MODE: automatically reduce 1 gear every 1 hour until it drops to 0 gear. 0 gear means low speed and will not stop.

SPEED BUTTON: 1 = lowest speed. 5 = highest speed.

NATURAL WIND MODE : designed for the elderly and children. 1-5 gear changes randomly to feel the breeze.

F/R: summer/winter reverse mode.

TIMER 1H/4H/8H: preset timer for fan and light to stop automatically. ie. if timer set at 1H and then press 4H, fan will stop at 4H. Setting default to last press.

Fan LED Light Model

Pairing the remote control

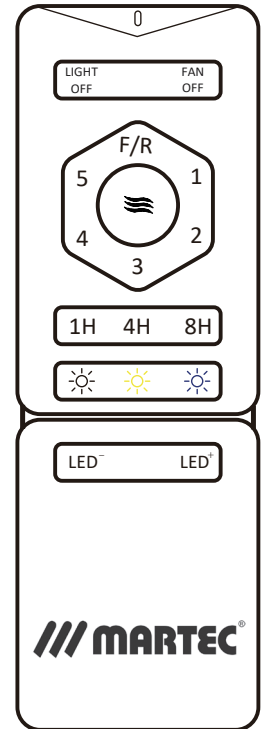
1. Turn on the ceiling fan.
2. Within the first 20 seconds, continue pressing the **FAN OFF** button until you hear a “beep” sound. ie. It is paired.

If you don't hear a “beep” sound, repeat step 1 and step 2 again.

Pairing the WiFi control

1. Turn on the ceiling fan.
2. Within the first 20 seconds, continue pressing the **LIGHT OFF** button until you hear a “beep” sound. ie. It is paired.

If you don't hear a “beep” sound, repeat step 1 and step 2 again.



FAN OFF: to switch off the fan.

SLEEP MODE: automatically reduce 1 gear every 1 hour until it drops to 0 gear. 0 gear means low speed and will not stop.

SPEED BUTTON: 1 = lowest speed. 5 = highest speed.

NATURAL WIND MODE : designed for the elderly and children. 1-5 gear changes randomly to feel the breeze.

F/R: summer/winter reverse mode.

TIMER 1H/4H/8H: preset timer for fan and light to stop automatically. ie. if timer set at 1H and then press 4H, fan will stop at 4H. Setting default to last press.

: warm white (3000K) / natural white (4000K) / cool white (5000K)

LED- LED+ : minus “-” = reduces brightness
plus “+” = increases brightness

6* Year Warranty

Visit our website for details <https://www.martecaustralia.com.au/warranty-statement/>



WARNING

- Installation of fans **MUST** follow SAA standards and meet local authority regulations.
- Installation **MUST** be carried out by a qualified and licensed electrician.
- Fan and light **MUST** be earthed.
- Bracket **MUST** be firmly attached to a flat solid structure or timber frame.
- **DO NOT** mix blades from one model to another, all blades **MUST** be replaced if damaged.
- The warranty is **VOID** if product is not installed according to this installation guide.