

Lisse RGBW LED Up & Down Wall Light

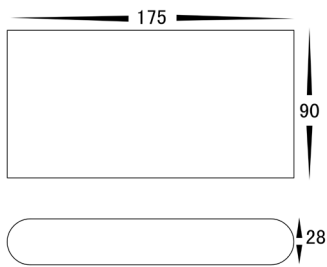
PRODUCT SPECIFICATIONS

Name	Lisse
Material	Aluminium
Colour	Black or White
IP Rating	IP54
Lamp Base	Built in LED
CRI	> 80
Wiring	Parallel
Dimmable	Yes with any RGBW controller
Warranty	2 Years Replacement

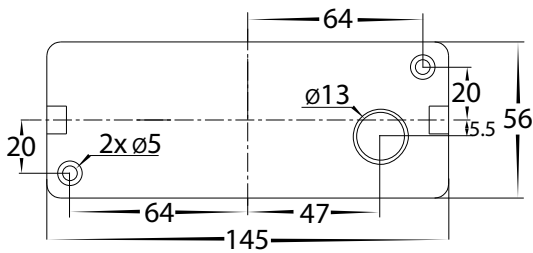


COLOUR TEMP 	IP RATING 	APPROVAL
------------------------	----------------------	---------------------

DIMENSIONS



MOUNTING BASE DIAGRAM



SUITABLE RGBW CONTROLLERS



HV9102-M4+M4-5A



HV9102-Q4*



HV9101-E4S

*Visit our website for receivers to suit above controllers

PART NUMBER	COLOUR TEMP	LUMENS	INPUT VOLTAGE	BEAM ANGLE	INCLUDED LED
HV3644RGBW-BLK	RGB + 3000k (RGBW)	2 x 300lm (3000k)	12v DC	120°	2 x 5w SMD LED
HV3644RGBW-WHT	RGB + 3000k (RGBW)	2 x 300lm (3000k)	12v DC	120°	2 x 5w SMD LED

Must be used with a suitable 12v DC LED Driver

For More Information Contact Havit Lighting

143 Beauchamp Road
Matraville NSW 2036
Australia

Tel: 02 9381 83000
Fax: 02 9666 888
Email: sales@havit.com.au
Web: www.havit.com.au



Warranty Terms & Conditions



Additional Information