


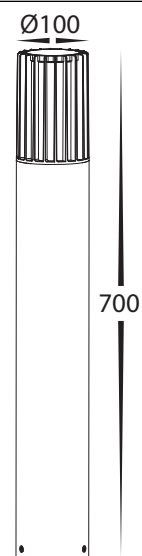
Tenac Bollard Light Installation Instructions



Product Specifications

Model No.	HV1693T-BLK-240V
Name	Tenac
Material	Aluminium
Colour	Black
Installation Type	Ground - Surface Mounted
IP Rating	IP54
Input Voltage	240V
Protection Class	1 (240v Requires Earth) 
Lamp Base	E27
Lamp Wattage	1x 9w
Colour Temp	TRI Colour - 3000k, 4000k, 5500k
Lumens	700lm, 720lm, 740lm
CRI	> 80
Wiring	Parallel
Dimmable	No
Warranty	3 Years Replacement*

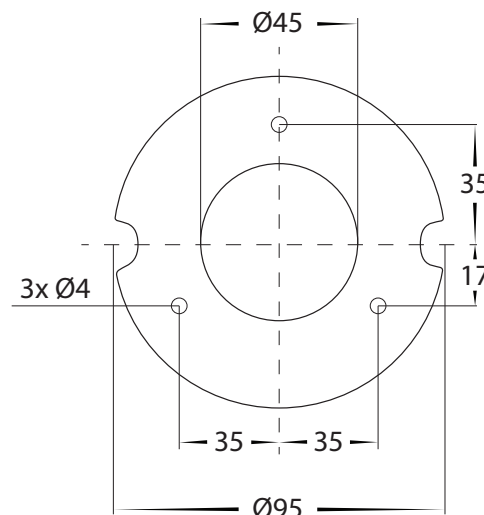
Dimensions



Important Safety Issues:

- This product must be installed by a qualified electrician according to AS/NZS 3000.
- Ensure all electrical mains are disconnected before any installation.
- Modification of this product will void any warranty.
- Havit Lighting does not take responsibility for wrong installation, incorrect use, or use of installation material that does not belong to the system.
- All electrical connections must be watertight, If a watertight connection is not done, Warranty will be voided.
- When installing surface mounted bollards, base plate must be installed on concrete, concrete pad or a solid surface, Fitting should not be installed under ground level or buried in concrete, all holes including cable entry must be covered and filled using silicon to prevent any water penetration into fitting, silicon must also be applied around fitting at ground level. Failure to do this will void warranty
- All o-rings and seals must be in place correctly to maintain warranty.
- These instructions may be updated at any time due to product improvements, Please visit website for most current installation instructions.

Mounting Base Dimensions



Steps for Installation:

1. Make sure that the electrical circuit is free of voltage (master switch off).
2. Remove 4x screws from side of fitting to remove base plate and put screws aside.
3. Install baseplate in desired location using appropriate screws for application. The screws supplied are mild steel which must be replaced with higher grade if there is any chance of them being affected by water. The location of baseplate must be installed on either concrete or concrete base and cannot be installed under ground level.
4. Locate IP rated junction box within fitting. Undo screws from junction box and remove cover.
5. Insert cable through cable gland on junction box. If your cable is not circular you must fix entry of your cable to maintain IP rating. Failure to do so will void warranty.
6. Connect the cable using wire with earth. Connect earth first, then live and neutral wires.
7. Reattach cover to IP rated junction box making sure screws are tight and seals are still in place.
8. Silicon all cable entry holes and fixing points on baseplate to avoid moisture penetration into fitting.
9. Place bollard onto base plate and reattach 4x screws set aside earlier and tighten.
10. Colour temperature is set to 3000K. To change, remove outer cover from fitting by twisting anti clockwise. Remove Internal Cover by undoing 4x screws and set aside, Twist globe anti clockwise and select desired colour temperature by moving switch on side of globe and then reinsert globe by twisting clockwise.
11. Place internal cover over globe and tighten 4x screws making sure seals are still in place. Reattach outer cover by twisting Clockwise until tightened
12. All connections must be carried out carefully, inspect all contacts before switching back on the electric circuit.

Steps for Changing Globe:

1. Make sure that the electrical circuit is free of voltage (master switch off).
2. Remove cover from fitting by twisting anti clockwise and set aside.
3. Remove globe by twisting anti clockwise
4. Re-insert the appropriate globe by twisting clockwise into the lamp holder (Make sure not to exceed max wattage, see product label for correct info)
5. Reattach cover by turning clockwise making sure the seals are still in place and cover is tight to avoid any water penetration.

Must be installed by a licensed electrician

Contact Details:

143 Beauchamp Road
Matraville NSW 2036
Australia

Tel: 02 9381 8300
Fax: 02 9666 8881
Email: sales@havit.com.au
Web: www.havit.com.au

Warranty Terms & Conditions*



www.havit.com.au

