

Installation Manual

HOIST-PDT

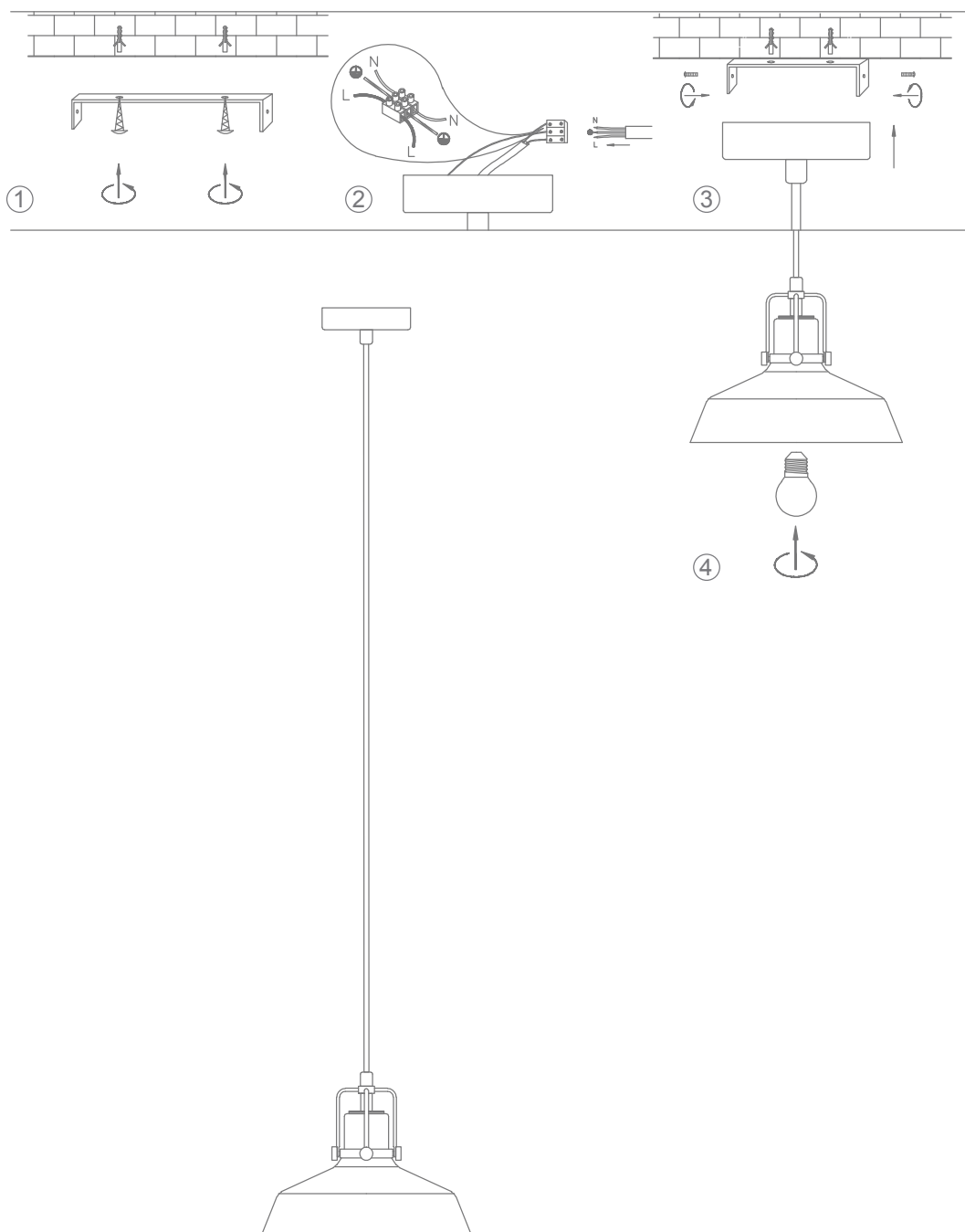
Date: February 17, 2022 2:55 PM

Variants			Item No.	Lamp Base
Blk/Clear	Sch/Smoke	Abr/Amber		
22731	22732	22733	HOIST-PDT	E27

Thank you for purchasing your new HOIST Pendant Light, Please take the time to read and understand the instruction sheet below. Failure to do so may void warranty.

Specifications

Voltage:	240V	Power:	25W LED Max	IP Rating:	20	Lamp Base:	E27
----------	------	--------	-------------	------------	----	------------	-----



Note: -The lamp must be installed by professional electrician
 -Ensure the power supply is switched off before fitting this product

-Do not touch the lamp when in use
 -Keep away from hot steam and corrosive gas