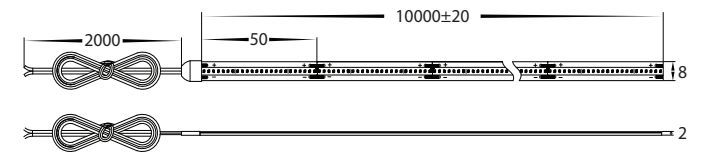
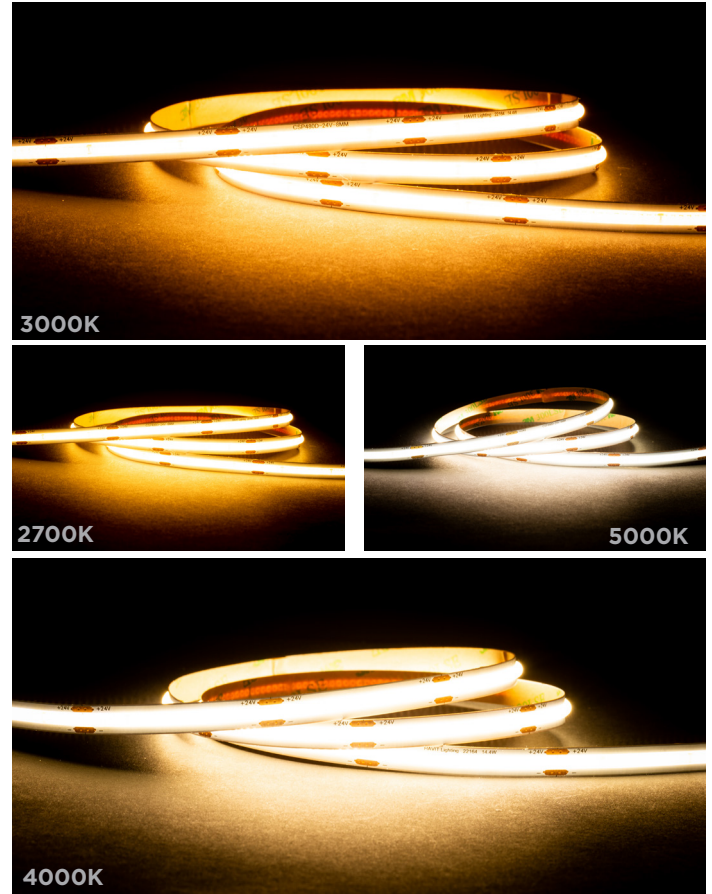


4.8W IP20 CSP LED STRIP LIGHT



4.8W IP20 CSP LED STRIP LIGHT	
LED CHIP TYPE	CSP
SIZE	8MM X 2MM
PCB	3OZ
LED CHIPS PER METRE	480LED
CUT INCREMENTS	EVERY 50MM
COLOUR TEMP	2700K 3000K 4000K 5000K
LUMEN OUTPUT	360LM 380LM 382LM 363LM
INPUT VOLTAGE	24V DC
WIRING	PARALLEL
MOUNTING	ALUMINIUM PROFILE OR HEAT SINK
MAXIMUM LENGTH	10,000MM
REQUIREMENTS	24V DC LED DRIVER
DIMMING	0-1/10V, DALI, DMX, RF, WIFI
OPERATING TEMP.	-20° TO 65° CELCIUS
AMBIENT TEMP.	-20° TO 45° CELCIUS
CRI	RA >90
BEAM ANGLE	120°
IP RATING	IP20
WARRANTY	5 YEARS REPLACEMENT*



SAMPLE COMPATIBLE CONTROLLERS

REMOTE	TOUCH PANEL	RF + WIFI	0-1/10V	DALI
HCP-78212	HCP-75215	HCP-77243	HCP-71211	HCP-72211

480LED CSP LED STRIP

	HCP-3925482	2700K	360LM
	HCP-3925483	3000K	380LM
	HCP-3925484	4000K	382LM
	HCP-3925485	5000K	363LM

COMPATIBLE DRIVERS

	NON DIMMABLE	30W/60W/100W/150W/200W/300W AVAILABLE
	TRIAC DIMMABLE	30W/60W/100W/150W/200W/300W AVAILABLE
	TRIAC+ 0-1/10V DIMMABLE	30W/60W/100W/150W AVAILABLE
	DALI DIMMABLE	30W/60W/100W/150W/200W/300W AVAILABLE



Web: www.havitcommercial.com.au
 Email: sales@havitcommercial.com.au
 Phone: 02 9381 8383

ADDRESS: 8/133 Beauchamp Road,
 Matraville, N.S.W., 2036



Warranty Terms & Conditions



www.havitcommercial.com.au