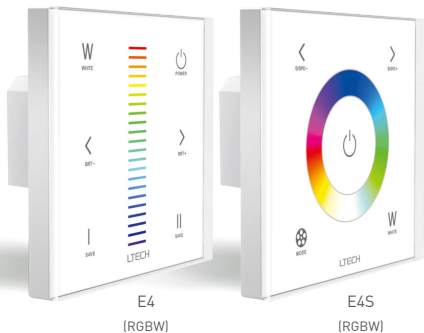
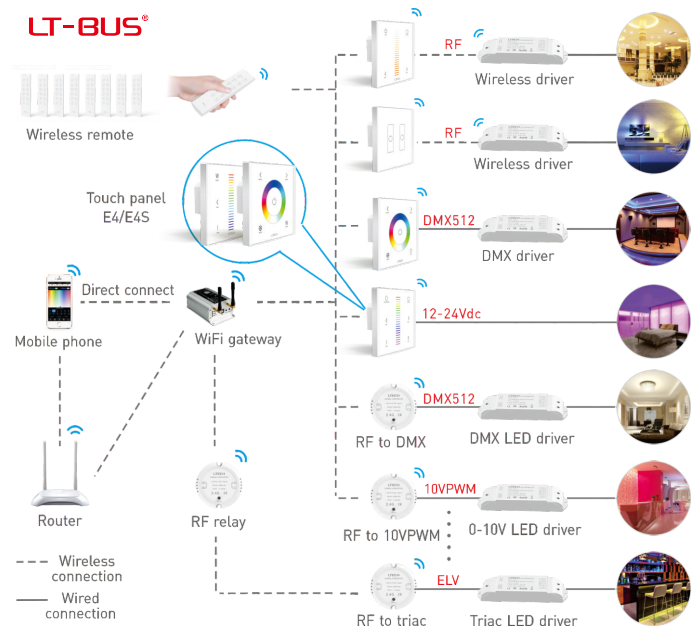


E Series Touch Panel



Manual
www.havit.com.au



Product Features

- 2 in 1 function: RF wireless control and PWM power output.
- Power output, lamps can be connected directly, easy and convenient.
- Touch keys with chord and LED indicator.
- Adopts capacitive touch control technology on the full color panel, makes LED color selection more user-friendly.
- Touch panel can be controlled by remote directly or smart phone if add a gateway.

Technical Specs

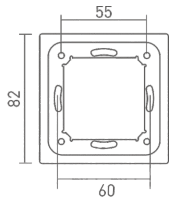
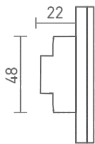
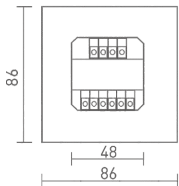
Input Voltage: 12-24Vdc

Wireless Frequency: RF 2.4GHz

Current Load: 3A×4CH Max. 12A

Output Power: [0-36W...72W]×4CH Max. 288W

Unit: mm



HV9101-E4S Touch Panel

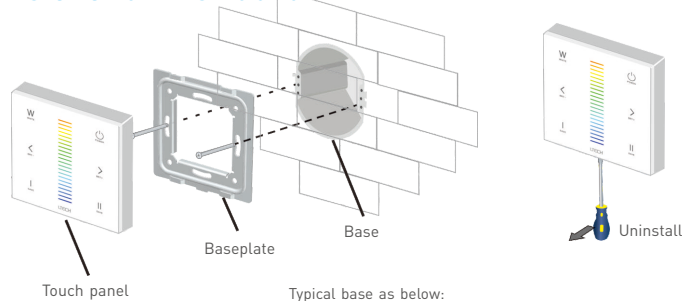
Working Temp.: -20°C~55°C

Dimensions: L86×W86×H36(mm)

Package Size: L113×W112×H50(mm)

Weight(G.W.): 225g

Installation Instruction

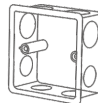


HV9101-E4S Touch Panel

Typical base as below:

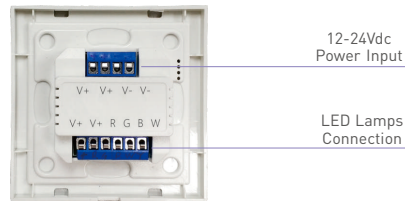


European style



86 size

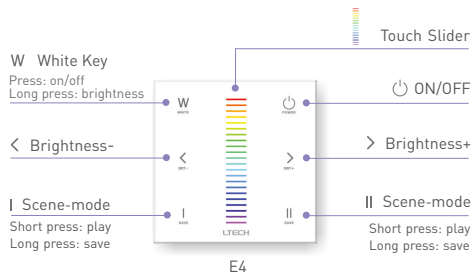
Terminals:



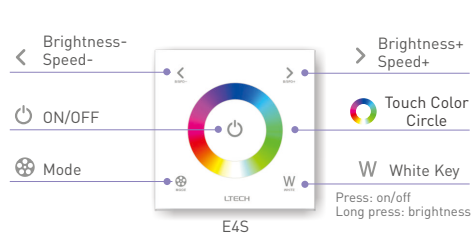
12-24Vdc
Power Input

LED Lamps
Connection

Key Functions:



E4 panel's 2 scene-mode keys are corresponding with WiFi-106 gateway APP's 1 & 2 scene-mode key, the scenes can be changed by APP or panel.

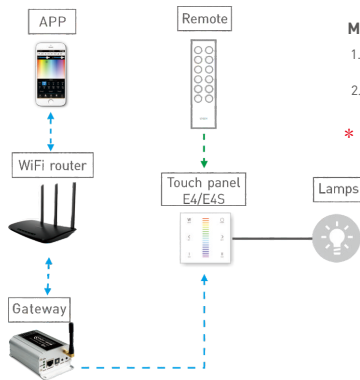


* When blue status light of key is on, long press to turn on/off buzzer.
When white status light of key is on, long press to match code.

Mode

1. Static red
2. Static green
3. Static blue
4. Static yellow
5. Static purple
6. Static cyan
7. Static white
8. RGB jumping
9. 7 Colors jumping
10. RGB color smooth
11. Full-color smooth
12. Static blue (only close RGB)

Match Code Sequence



Match code sequence

1. Configure gateway with touch panel, which enables the smart phone to control lamps via gateway.
2. Configure remote with touch panel, which enables remote to control lamps.

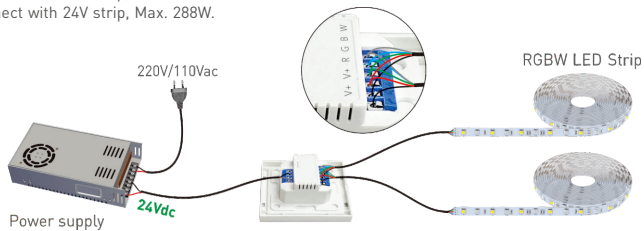
* PS: No WiFi router needed when gateway work with phones directly.

Application Composition




Wiring Diagram

Connect with 12V strip, Max. 144W.
Connect with 24V strip, Max. 288W.



Match Code between Touch Panel & Remote

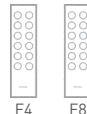
1.

Long press  on touch panel until all status lights flicker.



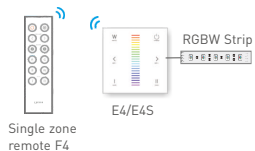
2.

Press any key on F4 remote (or the matching zone key on F8), the status light stop flicking, match successfully.

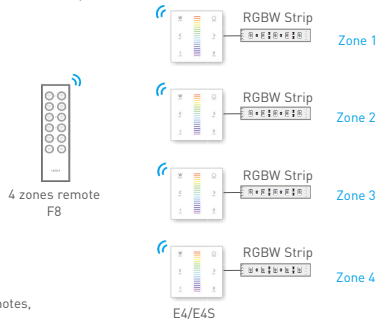


RF wireless wiring

Single zone control




Multiple zones control



Match code between touch panel & gateway

1.

Long press  on touch panel until all status lights flicker.



2.

Click the corresponding RGBW zone on mobile phone, then touch the color screen, match successfully.



Clear code:



Press the bottom two key on touch panel simultaneously for 5 seconds, the status light flicker several times, clear code successfully.

* Touch panels can be sync controlled by multi remotes, please refer to the manual of remote's usage.

* Please match/clear code when panel is on (white status light of  key is on).