

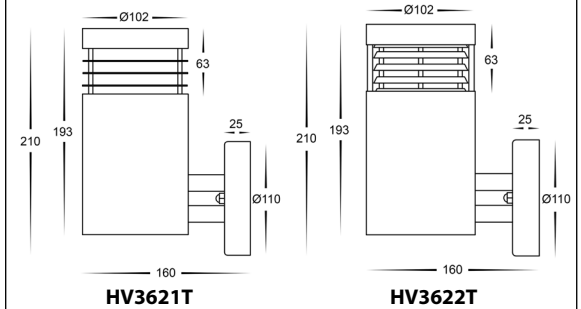
Mini Wall Light Installation Instructions



Product Specifications

Model No.	HV3621T-BLK	HV3621T-SS316	HV3622T-BLK	HV3622T-SS316
Name	Mini			
Material	316 Stainless Steel			
Colour	Black	Stainless Steel	Black	Stainless Steel
IP Rating	IP54			
Input Voltage	240v AC			
Lamp Base	E27			
Lamp Wattage	1x 9w			
Colour Temp	TRI Colour - 3000k, 4000k, 5500k			
Lumens	700lm, 720lm, 740lm			
CRI	> 80			
Wiring	Parallel			
Dimmable	No			
Warranty	2 Years Replacement*			

Dimensions



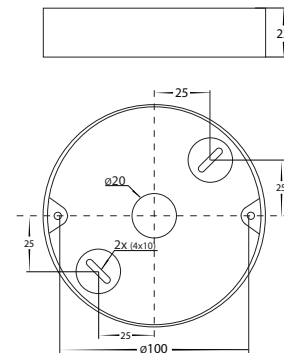
HV3621T

HV3622T

Important Safety Issues:

- This product must be installed by a qualified electrician according to AS/NZS 3000.
- Ensure all electrical mains are disconnected before any installation.
- Modification of this product will void any warranty.
- Havit Lighting does not take responsibility for wrong installation, incorrect use, or use of installation material that does not belong to the system.
- When installing low voltage fittings, Voltage to fitting must be within +or- 5% of voltage required, if not within this allowance warranty will be voided.
- Aluminium and 304SS fittings must not be installed within 2km of any salt water environments.
- When installing copper fittings, gloves must be worn to avoid any oils transferring to fitting.
- All 316 & 304 stainless steel fittings must have regular cleaning maintenance to avoid any tea staining from forming on fitting. (Warranty does not cover Tea Staining)
- All o-rings and seals must be in place correctly to maintain warranty
- This form may be updated at any time due to product improvements, please check online installation form for most current version.

Mounting Base Diagram



Steps for Installation:

1. Make sure that the electrical circuit is free of voltage (master switch off)
2. Loosen screws nuts from base of fitting set aside.
3. Install base plate to wall in desired location
4. Connect the cable - use wire with earth; connect the earth first, then live and neutral wire
5. Reattach fitting to base plate making sure nuts are tight to avoid water penetration
6. Apply silicon around edge of fitting to prevent any water from getting inside to electrical connections.
7. Colour temperature is set to 3000K. To change, remove cover from fitting by twisting anti clockwise. for HV3621 models, remove the 2x nuts and washers and put aside Remove globe by also twisting anti clockwise and select desired colour temperature by moving switch on side of globe and then reinsert globe.
8. Reattach cover by turning clockwise or for HV3621 Model, reattach the 2x nuts first, making sure the seals are still in place and cover is tight to avoid any water penetration.
9. All connections must be carried out carefully, inspect all contacts before switching back on the electric circuit.

Steps for Changing Globe:

1. Remove cover from fitting by twisting anti clockwise. for HV3621 models, remove the 2x nuts and washers and put aside Remove globe by also twisting anti clockwise.
2. Re-insert the appropriate globe by twisting clockwise into the lamp holder (Make sure not to exceed max wattage, see product label for correct info)
3. Reattach cover by turning clockwise or for HV3621 Models, reattach the 2x nuts first, making sure the seals are still in place and cover is tight to avoid any water penetration.

Must be installed by a licensed electrician

Contact Details:

143 Beauchamp Road
Matraville NSW 2036
Australia
Tel: 02 9381 8300
Fax: 02 9666 8881
Email: sales@havit.com.au
Web: www.havit.com.au

Warranty Terms & Conditions*



Additional Information



HV3621T-BLK

HV3621T-SS316

HV3622T-BLK

HV3622T-SS316