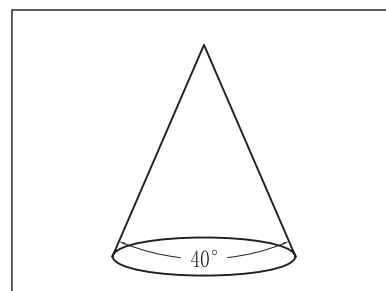
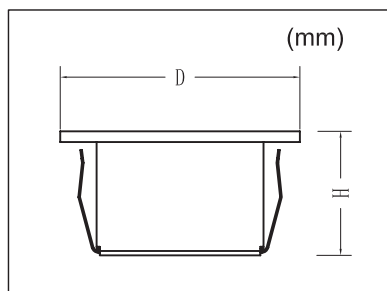


**HV3216W-BLK, HV3216N-BLK, HV3216C-BLK, HV3216W-WHT,
 HV3216N-WHT, HV3216C-WHT, HV3216W-SS316, HV3216N-SS316,
 HV3216C-SS316, HV3206W-BLK, HV3206N-BLK, HV3206C-BLK,
 HV3206W-WHT, HV3206N-WHT, HV3206C-WHT, HV3206W-SS316,
 HV3206N-SS316, HV3206C-SS316**



Recessed LED Steplights / Installation Instructions

Model No.	Voltage	Power	Color	Size(DXH):mm	Material	IP Grade
HV3216W-BLK	DC12V	1W	3000K	55*55*28	AL	IP67
HV3216N-BLK	DC12V	1W	4000K	55*55*28	AL	IP67
HV3216C-BLK	DC12V	1W	5500K	55*55*28	AL	IP67
HV3216W-WHT	DC12V	1W	3000K	55*55*28	AL	IP67
HV3216N-WHT	DC12V	1W	4000K	55*55*28	AL	IP67
HV3216C-WHT	DC12V	1W	5500K	55*55*28	AL	IP67
HV3216W-SS316	DC12V	1W	3000K	55*55*28	316	IP67
HV3216N-SS316	DC12V	1W	4000K	55*55*28	316	IP67
HV3216C-SS316	DC12V	1W	5500K	55*55*28	316	IP67
HV3206W-BLK	DC12V	1W	3000K	Ø55*28	AL	IP67
HV3206N-BLK	DC12V	1W	4000K	Ø55*28	AL	IP67
HV3206C-BLK	DC12V	1W	5500K	Ø55*28	AL	IP67
HV3206W-WHT	DC12V	1W	3000K	Ø55*28	AL	IP67
HV3206N-WHT	DC12V	1W	4000K	Ø55*28	AL	IP67
HV3206C-WHT	DC12V	1W	5500K	Ø55*28	AL	IP67
HV3206W-SS316	DC12V	1W	3000K	Ø55*28	316	IP67
HV3206N-SS316	DC12V	1W	4000K	Ø55*28	316	IP67
HV3206C-SS316	DC12V	1W	5500K	Ø55*28	316	IP67



Symbols



Dust tight - zero ingress of dust permitted. Protected against the effects of immersion between 15cm to 1m.



The WEEE symbol (Waste of electrical and electronic equipment) - indicating separate collection for WEEE-Waste.



Class of protection (SELV).



All material used complies with RoHS standards.

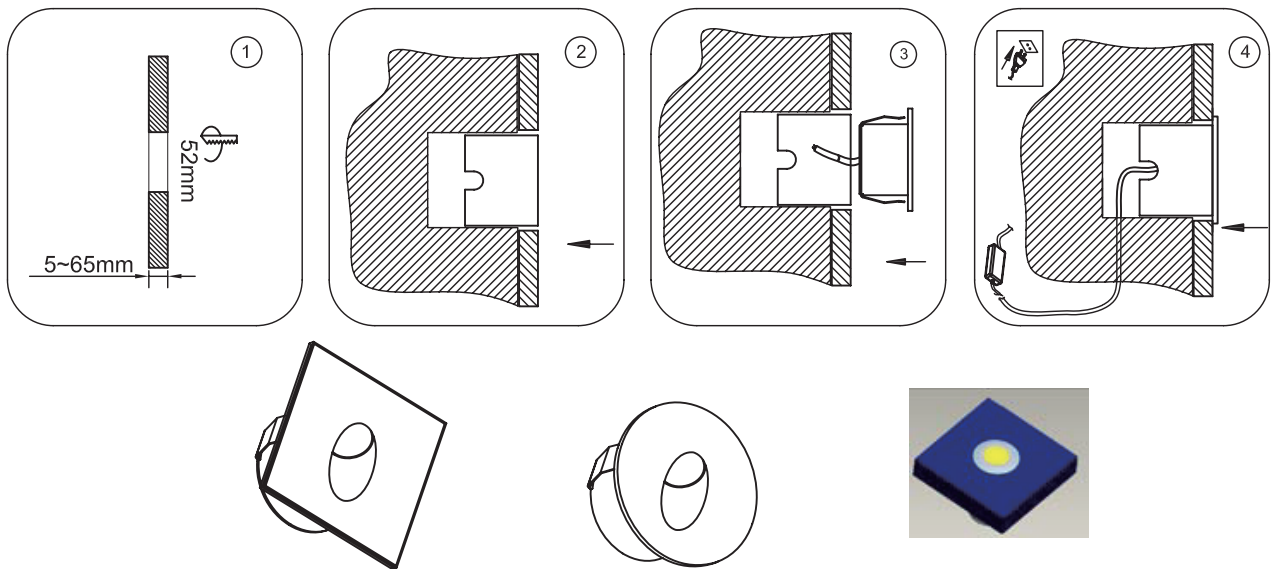


LED light source.

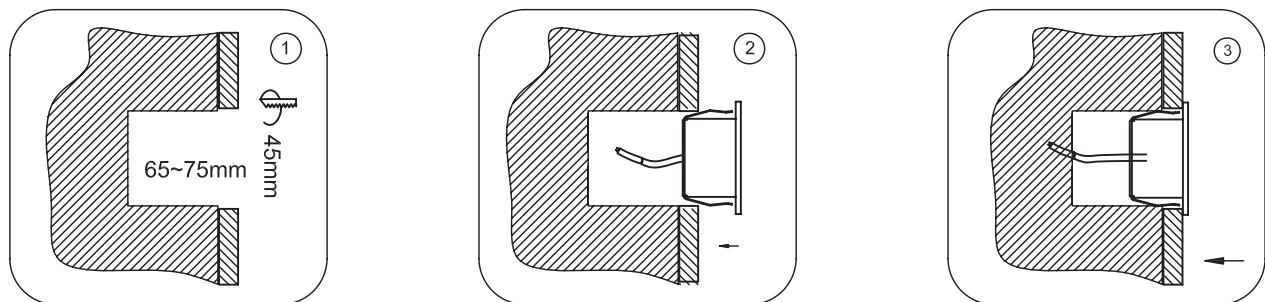
SAFETY INSTRUCTIONS

Please read these instructions carefully before commencing installation and retain for future reference. This Havit Lighting product should be installed by a licensed electrician ONLY, and in accordance with all local regulations. Make sure that mains power is off before installation or maintenance.

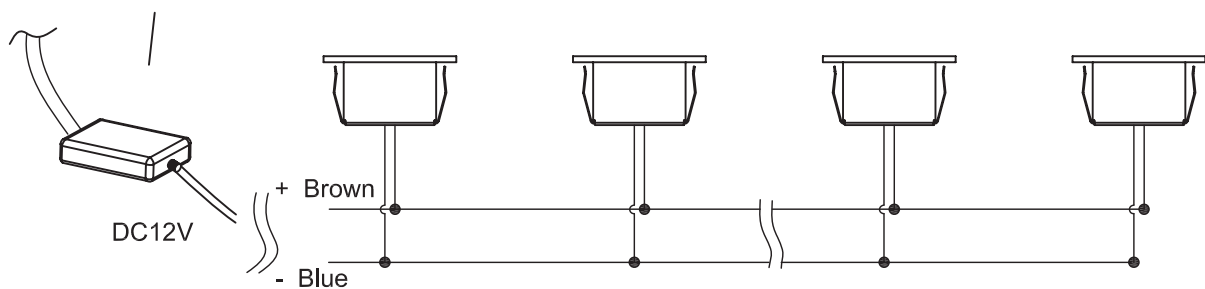
Installation Instructions I



Installation Instructions II



LED Driver



1. This Havit Lighting product must be used with a DC 12V constant voltage driver. If an incorrect power source is used, this may damage the fitting and will also void warranty.
2. Do not look directly at the light - this may cause damage to eye sight.
3. Please note the correct cut out dimensions before beginning installation.
4. Ensure the LED luminaire is connected correctly before switching power on.
5. Stainless steel surfaces should be maintained regularly - see Havit Lighting stainless steel maintenance instructions.
6. If this product is altered in any way the manufacturer warranty will be void.
7. The manufacturer is free to change the design, specifications and instructions for assembly.