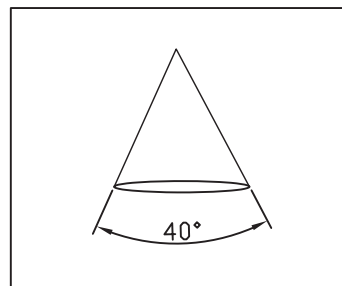
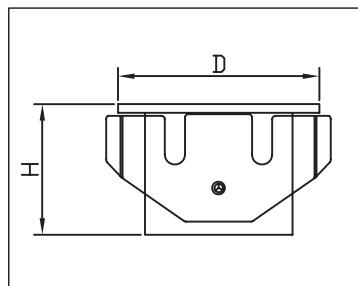


**HV3215W-BLK, HV3215N-BLK, HV3215C-BLK, HV3215W-WHT,  
 HV3215N-WHT, HV3215C-WHT, HV3215W-SS316, HV3215N-SS316,  
 HV3215C-SS316, HV3205W-BLK, HV3205N-BLK, HV3205C-BLK,  
 HV3205W-WHT, HV3205N-WHT, HV3205C-WHT, HV3205W-SS316,  
 HV3205N-SS316, HV3205C-SS316**



## Recessed LED Steplights / Installation Instructions

Model No.	Voltage	Power	Color	Size(DXH):mm	Material	IP Grade
HV3215W-BLK	DC12V	3W	3000K	80*80*36	AL	IP67
HV3215N-BLK	DC12V	3W	4000K	80*80*36	AL	IP67
HV3215C-BLK	DC12V	3W	5500K	80*80*36	AL	IP67
HV3215W-WHT	DC12V	3W	3000K	80*80*36	AL	IP67
HV3215N-WHT	DC12V	3W	4000K	80*80*36	AL	IP67
HV3215C-WHT	DC12V	3W	5500K	80*80*36	AL	IP67
HV3215W-SS316	DC12V	3W	3000K	80*80*36	316	IP67
HV3215N-SS316	DC12V	3W	4000K	80*80*36	316	IP67
HV3215C-SS316	DC12V	3W	5500K	80*80*36	316	IP67
HV3205W-BLK	DC12V	3W	3000K	Ø80*36	AL	IP67
HV3205N-BLK	DC12V	3W	4000K	Ø80*36	AL	IP67
HV3205C-BLK	DC12V	3W	5500K	Ø80*36	AL	IP67
HV3205W-WHT	DC12V	3W	3000K	Ø80*36	AL	IP67
HV3205N-WHT	DC12V	3W	4000K	Ø80*36	AL	IP67
HV3205C-WHT	DC12V	3W	5500K	Ø80*36	AL	IP67
HV3205W-SS316	DC12V	3W	3000K	Ø80*36	316	IP67
HV3205N-SS316	DC12V	3W	4000K	Ø80*36	316	IP67
HV3205C-SS316	DC12V	3W	5500K	Ø80*36	316	IP67



## Symbols



Dust tight - zero ingress of dust permitted. Protected against the effects of immersion between 15cm to 1m.



The WEEE symbol (Waste of electrical and electronic equipment) - indicating separate collection for WEEE-Waste.



Class of protection (SELV).



All material used complies with RoHS standards.

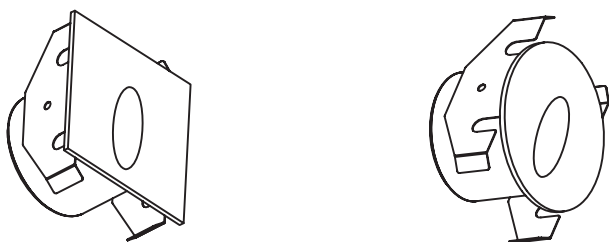
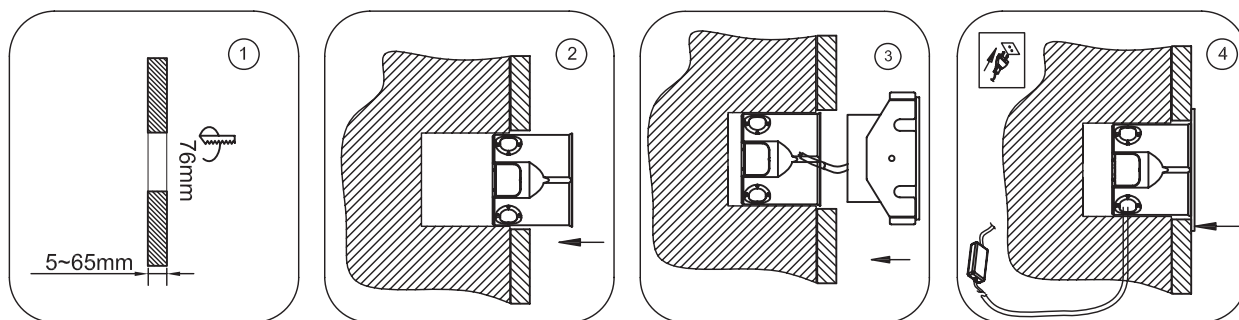


LED light source.

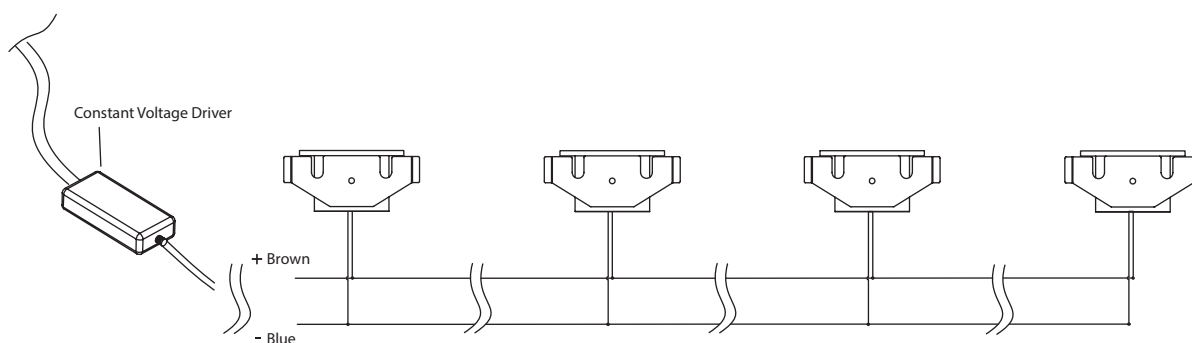
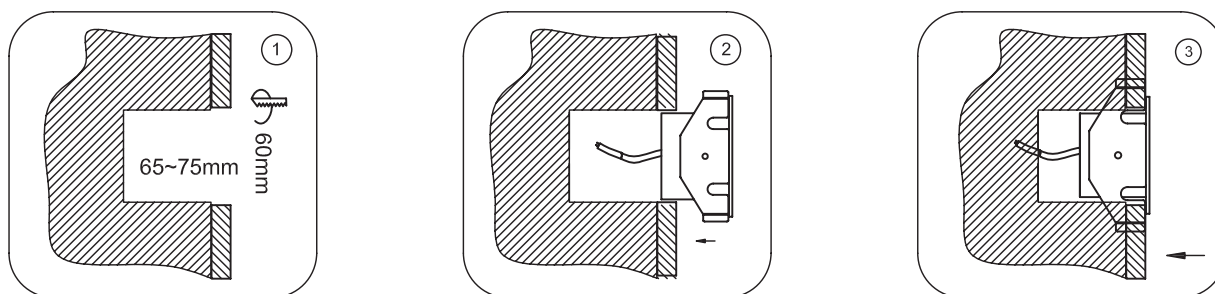
## SAFETY INSTRUCTIONS

Please read these instructions carefully before commencing installation and retain for future reference. This Havit Lighting product should be installed by a licensed electrician ONLY, and in accordance with all local regulations. Make sure that mains power is off before installation or maintenance.

## Installation Instructions I



## Installation Instructions II



1. This Havit Lighting product must be used with a DC 12V constant voltage driver. If an incorrect power source is used, this may damage the fitting and will also void warranty.
2. Do not look directly at the light - this may cause damage to eye sight.
3. Please note the correct cut out dimensions before beginning installation.
4. Ensure the LED luminaire is connected correctly before switching power on.
5. If this product is altered in any way the manufacturer warranty will be void.
6. The manufacturer is free to change the design, specifications and instructions for assembly.