

Highlite Bollard Light Installation Instructions



Product Specifications		Mounting Base	Dimensions
Model No.	HV1622T-BLK-12V		
Name	Highlite		
Material	Aluminium		
Colour	Black		
IP Rating	IP65		
Input Voltage	12v DC		
Lamp Base	Built in LED		
Lamp Wattage	1x 12w		
Colour Temp	TRI Colour - 3000k, 4000k, 5500k		
Lumens	860lm, 915lm, 970lm		
CRI	> 80		
Wiring	Parallel		
Dimmable	No		
Warranty	2 Years Replacement*		

Important Safety Issues:

- This product must be installed by a qualified electrician according to AS/NZS 3000.
- Ensure all electrical mains are disconnected before any installation.
- Do not exceed maximum wattage restrictions for globes: 240V GU10 = 35w / 12V MR16 = 20w
- Modification of this product will void any warranty.
- Havit Lighting does not take responsibility for wrong installation, incorrect use, or use of installation material that does not belong to the system.
- When installing low voltage fittings, Voltage to fitting must be within +or- 5% of voltage required and cannot be installed more than 25m from LED Driver, if not within this allowance warranty will be voided.
- Aluminium and 304SS fittings must not be installed within 2km of any salt water environments.
- When installing copper fittings, gloves must be worn to avoid any oils transferring to fitting.
- All 316 stainless steel fittings must have regular cleaning maintenance to avoid any tea staining from forming on fitting. (Warranty does not cover Tea Staining)
- When installing surface mounted bollards, base plate must be installed on concrete or concrete pad, Fitting should not be installed under ground level, all holes including cable entry must be siliconed to prevent any water penetration into fitting, silicon must also be applied around fitting at ground level. Failure to do this will void warranty
- All o-rings and seals must be in place correctly to maintain warranty.
- These instructions may be updated at any time due to product improvements, Please visit website for most current installation instructions.

Steps for Installation:

1. Make sure that the electrical circuit is free of voltage (master switch off).
2. Remove baseplate from fitting by twisting anti clockwise.
3. Install baseplate in desired location using appropriate screws for application. The screws supplied are mild steel which must be replaced with higher grade if there is any chance of them being affected by water. The location of baseplate must be installed on either concrete or concrete base and cannot be installed under ground level.
4. If using extension piece, attach it to Bollard now by twisting clockwise until 2 pieces are completely together.
5. Use an appropriate 12v DC LED Driver - DO NOT CONNECT LIGHT FITTING DIRECT TO 240V
6. Strip back cable on both fittings and cable run and twist the positive cable from fitting to positive on the cable run, then connect neutral from fitting to neutral on the cable run.
7. Solder all joins using solder and either a heat gun or butane gas torch.
8. Cover connections using an adhesive lined heat shrink or gel cap to make connection watertight. Failure to do this will void warranty.
9. Heat the heat shrink or crimp the gel cap making sure all connections are covered.
10. Silicon all cable entry holes and fixing points on baseplate to avoid moisture penetration into fitting.
11. Affix the bollard to the baseplate by twisting clockwise until it stops.
12. Colour temperature is set to 3000K. To change, remove cap from fitting by twisting anti clockwise. Select desired colour temperature by moving switch located on the centre of PCB
13. Attach cover by turning clockwise making sure the seals are still in place and caps are tight to avoid any water penetration.
14. All connections must be carried out carefully, inspect all contacts before switching back on the electric circuit.

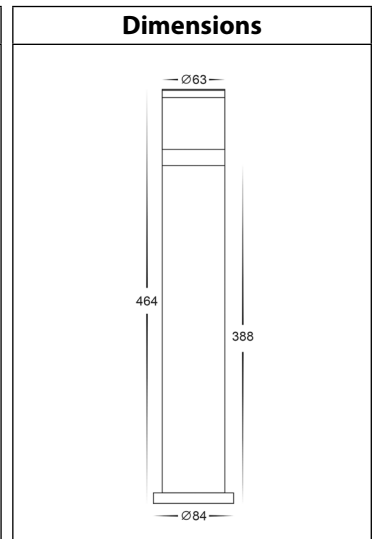
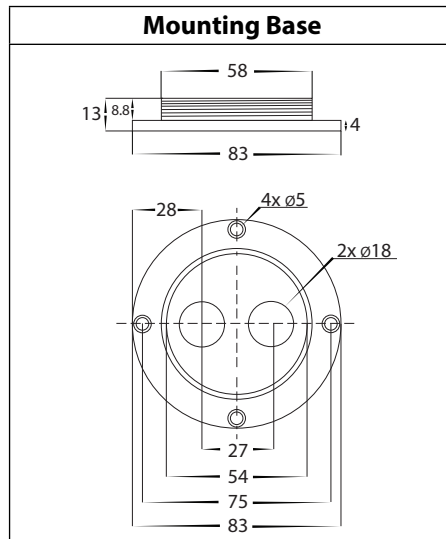
Must be installed by a licensed electrician

Contact Details:	Warranty Terms & Conditions*	Additional Information
143 Beauchamp Road Matraville NSW 2036 Australia Tel: 02 9381 8300 Fax: 02 9666 8881 Email: sales@havit.com.au Web: www.havit.com.au		

Highlite Bollard Light Installation Instructions



Product Specifications	
Model No.	HV1622T-BLK-240V
Name	Highlite
Material	Aluminium
Colour	Black
IP Rating	IP65
Input Voltage	240v AC
Lamp Base	Built in LED
Lamp Wattage	1x 12w
Colour Temp	TRI Colour - 3000k, 4000k, 5500k
Lumens	860lm, 915lm, 970lm
CRI	> 80
Wiring	Parallel
Dimmable	No
Warranty	2 Years Replacement*



Important Safety Issues:

- This product must be installed by a qualified electrician according to AS/NZS 3000.
- Ensure all electrical mains are disconnected before any installation.
- Modification of this product will void any warranty.
- Havit Lighting does not take responsibility for wrong installation, incorrect use, or use of installation material that does not belong to the system.
- When installing low voltage fittings, Voltage to fitting must be within +or- 5% of voltage required, if not within this allowance warranty will be voided.
- Aluminium and 304SS fittings must not be installed within 2km of any salt water environments.
- When installing copper fittings, gloves must be worn to avoid any oils transferring to fitting.
- All 316 & 304 stainless steel fittings must have regular cleaning maintenance to avoid any tea staining from forming on fitting. (Warranty does not cover Tea Staining)
- All o-rings and seals must be in place correctly to maintain warranty
- When installing surface mounted bollards, base plate must be installed on concrete or concrete pad, Fitting should not be installed under ground level, all holes including cable entry must be siliconed to prevent any water penetration into fitting, silicon must also be applied around fitting at ground level. Failure to do this will void warranty
- This form may be updated at any time due to product improvements, please check online installation form for most current version.

Steps for Installation:

1. Make sure that the electrical circuit is free of voltage (master switch off).
2. Remove baseplate from fitting by twisting anti clockwise.
3. Install baseplate in desired location using appropriate screws for application. The screws supplied are mild steel which must be replaced with higher grade if there is any chance of them being affected by water. The location of baseplate must be installed on either concrete or concrete base and cannot be installed under ground level.
4. If using extension piece, attach it to Bollard now by twisting clockwise until 2 pieces are completely together.
5. To connect the cable, strip back cable on both fitting and cable run and twist the earths together first, then positive cable from fitting to positive on the cable run. Then connect neutral from fitting to neutral on cable run.
6. Solder all joins using solder and either a heat gun or butane gas torch.
7. Cover connections using an adhesive lined heat shrink or gel cap to make connection watertight. Failure to do this will void warranty.
8. Heat the heat shrink or crimp the gel cap making sure all connections are covered.
9. Silicon all cable entry holes and fixing points on baseplate to avoid moisture penetration into fitting.
10. Affix the bollard to the baseplate by twisting clockwise until it stops.
11. Colour temperature is set to 3000K. To change, remove cap from fitting by twisting anti clockwise. Select desired colour temperature by moving switch located on the centre of PCB
12. Attach cover by turning clockwise making sure the seals are still in place and caps are tight to avoid any water penetration.
13. All connections must be carried out carefully, inspect all contacts before switching back on the electric circuit.

Must be installed by a licensed electrician

Contact Details:	Warranty Terms & Conditions*	Additional Information
143 Beauchamp Road Matraville NSW 2036 Australia Tel: 02 9381 8300 Fax: 02 9666 8881 Email: sales@havit.com.au Web: www.havit.com.au		