

Installation Manual

FELIX-PDT

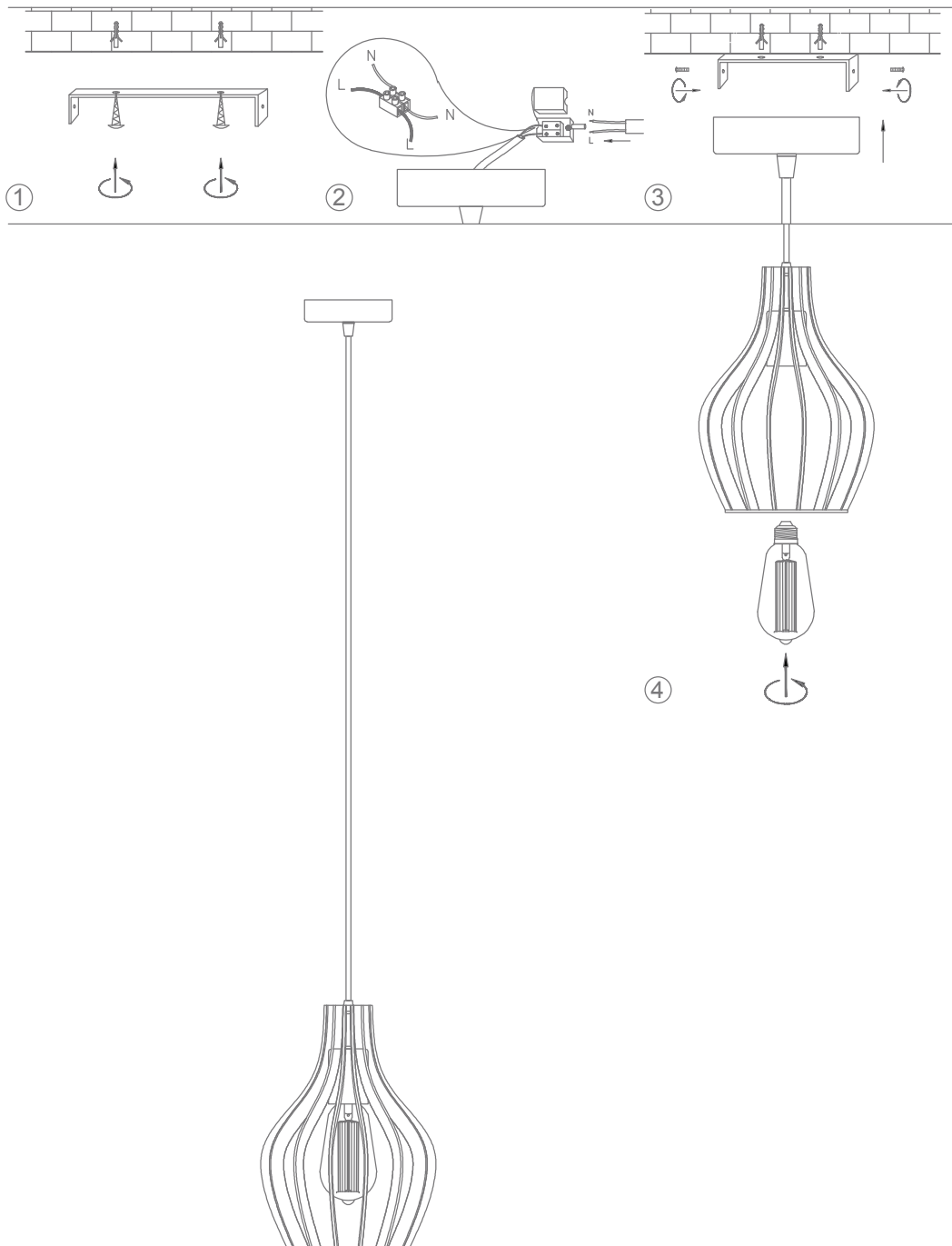
Date: February 17, 2022 2:41 PM

Variants	Item No.	Lamp Base
22765	FELIX-PDT	E27

Thank you for purchasing your new FELIX Pendant Light, Please take the time to read and understand the instruction sheet below. Failure to do so may void warranty.

Specifications

Voltage:	240V	Power:	25W LED Max	IP Rating:	20	Lamp Base:	E27
----------	------	--------	-------------	------------	----	------------	-----



Note: -The lamp must be installed by professional electrician
 -Ensure the power supply is switched off before fitting this product

-Do not touch the lamp when in use
 -Keep away from hot steam and corrosive gas