 Do not dispose of electrical appliances as unsorted municipal waste, use separate collection facilities. Contact your local council for more information regarding the collection systems available. If electrical appliances are disposed of in landfills or dumps, hazardous substances can leak into the ground water and get into the food chain, damaging your health and well-being.

EGLO Lighting has a policy of continual product improvement and development, dimensions, hardware and designs may change to reflect this policy. EGLO reserves the right to discontinue or change product specifications & designs at any time without notice and without incurring obligations. The images including all features and specifications in this manual are for illustrative purposes only. Product details, images & line drawings may vary depending on specific product models.

Installation Manual  
Use & Care Guide  
Warranty Information

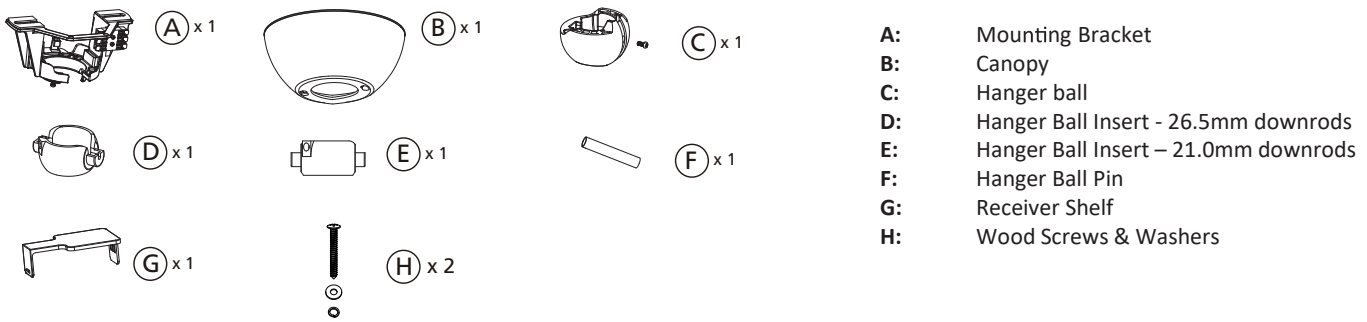
**40 Degree Canopy**  
20557501, 20557502, 20557504, 20557512

\*Suitable for use with compatible  
EGLO ceiling fan models only

## FOR YOUR SAFETY:

1. The fixing point for your ceiling fan must be of sound construction, undamaged, and capable of supporting a load of 35Kg, or 4 times the weight of the fan plus the method of attachment, whichever is greater.
2. Care needs to be taken to ensure the installation location does not allow the fan blades to come into contact with any object or surface. There must be a minimum of 60cm clearance between the blade tip (end) and the nearest wall or object. Reduced clearances to walls or ceiling can not only reduce the amount of air your fan can move, but also cause your fan to de-stabilise.
3. The installation should also allow for a clearance of 2.1m between the floor and the bottom of the blades. The installation should allow for a minimum of 3.0m between ceiling fans.
4. The fan and the hanging bracket must be earthed.

## PARTS LIST:



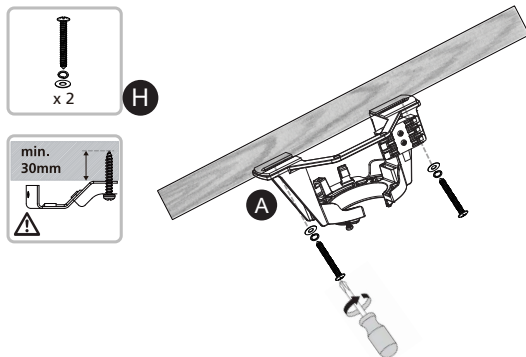
## INSTALLATION:

**IMPORTANT: Check that the power is disconnected and/or the mains switched off at the circuit box to ensure all pole isolation of the power supply.**

**Important:** When mounted on angled/sloped ceilings, the hanger bracket must be installed so that the opening is facing across the direction of ceiling pitch. This angle ceiling bracket must only be used on a maximum 40 degree sloped ceiling pitch, and must have a minimum of 60cm clearance from the lower side of the ceiling to the edge of the fan blade. It would be expected that in many installations, and extension downrod will need to be purchased separately.

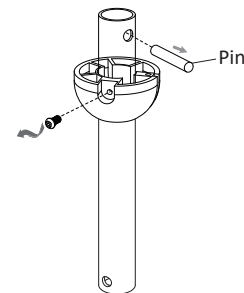
**Note:** The fixing screws included are designed for use with timber ceiling joists, for all other materials, the appropriate fixing screws will need to be purchased separately.

1



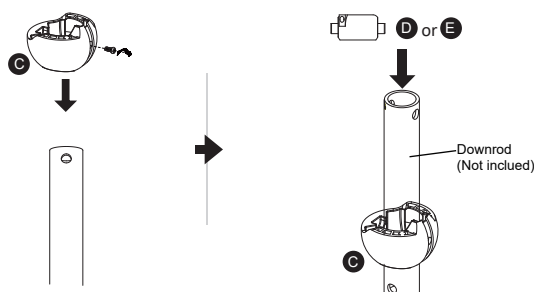
2

**Note:** Remove the hanger ball from your existing downrod assembly by removing the screw, lowering the hanger ball, and removing the pin, before sliding the hanger ball off the downrod.

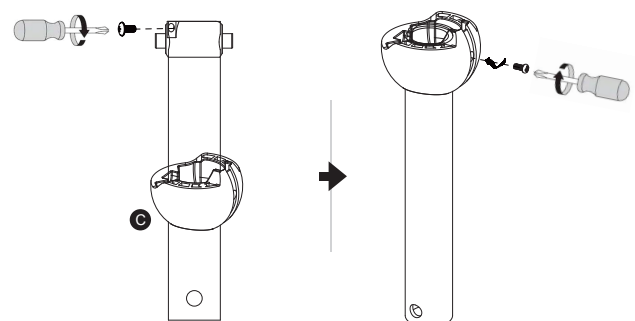


3

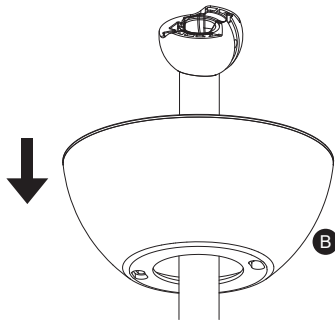
**Important:** Select the correct size hanger ball insert (D or E), according to the diameter of the downrod on the fan being installed.



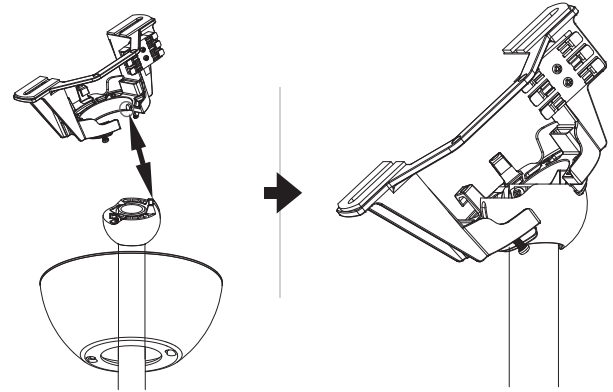
4



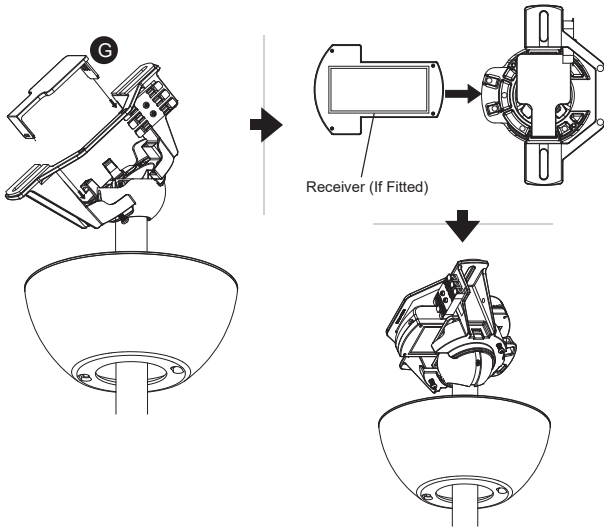
5



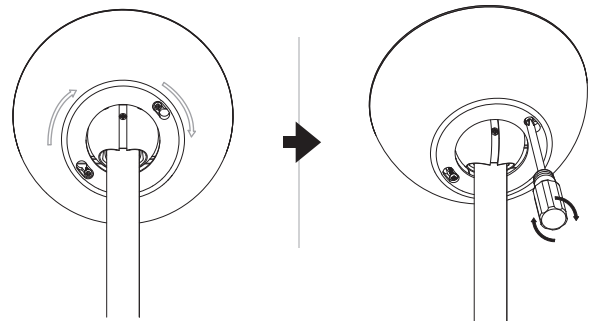
6



7



8



## WIRING CONNECTIONS:

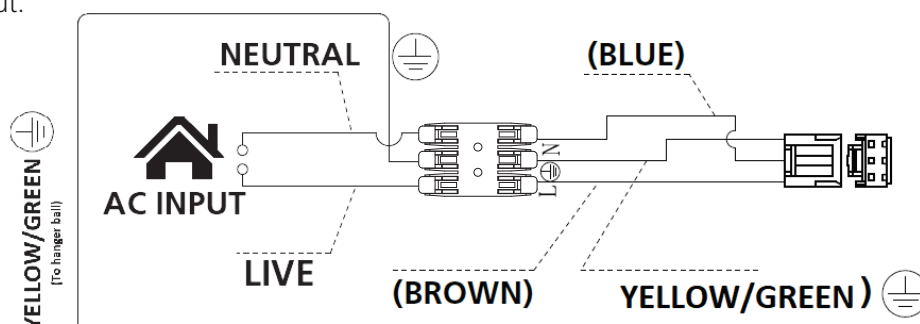
**WARNING:**  
**FOR YOUR SAFETY ALL ELECTRICAL CONNECTIONS MUST ONLY BE UNDERTAKEN BY A QUALIFIED AND LICENSED ELECTRICIAN.**

**WARNING:** An all-pole disconnection **MUST** be incorporated into the fixed wiring in accordance with the wiring rules, as outlined in clause 7.12.2 of AS/NZS 60335-1 for meeting the minimum electrical safety of this standard. Please note warranty will be void if the installation is without a means for an all-pole disconnection incorporated in the fixed wiring in accordance with the wiring rules.

A single pole isolation switch must be also placed in the same room as the fan as per local wiring regulations AS/NZS 3000, in accordance with clause 2.3.2.2.1& 4.13.1.3 of AS/NZS 3000.

**Note:** If there are two or more ceiling fans installed in the one location/room, an isolation switch is required for EACH ceiling fan. This is required when programming any remote-control transmitter & receiver to pair together, and for fan servicing.

1. Connect the receiver to the fan/light as per ceiling fan manual.
2. Using the wiring harness from the terminal block/hanger bracket of the original hanger bracket supplied with the fan, connect to the 40 degree mounting bracket quick connect terminals.
3. Connect AC input.



## COMMERCIAL USE:

This product is warranted for commercial applications.

## MAINTENANCE:

Ceiling fans natural movement can cause screws to loosen. Every 6 months, check that ALL screws are securely tightened with a screwdriver including the set screws in the hanger ball.

## REPLACEMENT WARRANTY:

EGLO offers the original purchaser a replacement of the EGLO product in cases where the product fails due to defective materials or workmanship, when installed and operated under normal domestic/residential conditions for 1 year. The warranty period begins from the date of purchase.

You must provide proof of purchase (such as the original dated purchase receipt/invoice) from an authorised EGLO reseller to make a warranty claim. You must also provide a receipt from installation, including the electrical contractors licence number - if an electrical licence number cannot be supplied, your claim will be denied. This warranty will not apply if the ceiling fan is installed by anyone other than a qualified and licensed electrical contractor.

### REPAIRS / REPLACEMENTS

EGLO products presented for repair may be replaced by refurbished goods of the same type rather than being repaired at the discretion of EGLO. Refurbished parts may be used to repair the goods to proper order.

### BALANCE OF WARRANTY

To the maximum extent permitted by law, any product replaced, repaired or refurbished by EGLO is covered only by the balance of the warranty period remaining from the date of original purchase of the original EGLO product.

EGLO Lighting (EGLO) will not be liable for charges incurred by the consumer for rectification, deinstallation or reinstallation unless approved by EGLO management in writing.

For all warranty enquiries, please phone the EGLO Customer Care hotline directly on 1800 254 448 or email [warranty@eglolighting.com.au](mailto:warranty@eglolighting.com.au), along with your details, proof of purchase & proof of electrical installation (including electrical contractor licence number), and the nature of the problem.

## WHAT IS NOT COVERED:

Subject to "Your Consumer Rights", but otherwise to the maximum extent permitted by law, the EGLO warranties provided in this document will not cover the following:

1. EGLO products that are not purchased from an authorised retailer and installed in Australia.
2. Where installation was not carried out by a qualified and licensed electrical contractor or where a valid Electrical Safety Certificate or installers invoice with licence number cannot be presented.
3. Defect, damage or failure to a EGLO product resulting from misuse, accident, neglect, abuse, tampering, modifications or unauthorised repairs of any kind by any person.
4. Damages not caused by a fault in the EGLO product materials or workmanship.
5. Transportation and in-transit insurance costs, if the product or parts thereof have to be returned for repair or replacement to the retailer or the authorised service agent.
6. Faults deemed caused by a lack of regular maintenance, e.g. screws and nuts becoming loose.