

Installation Manual

DIANA

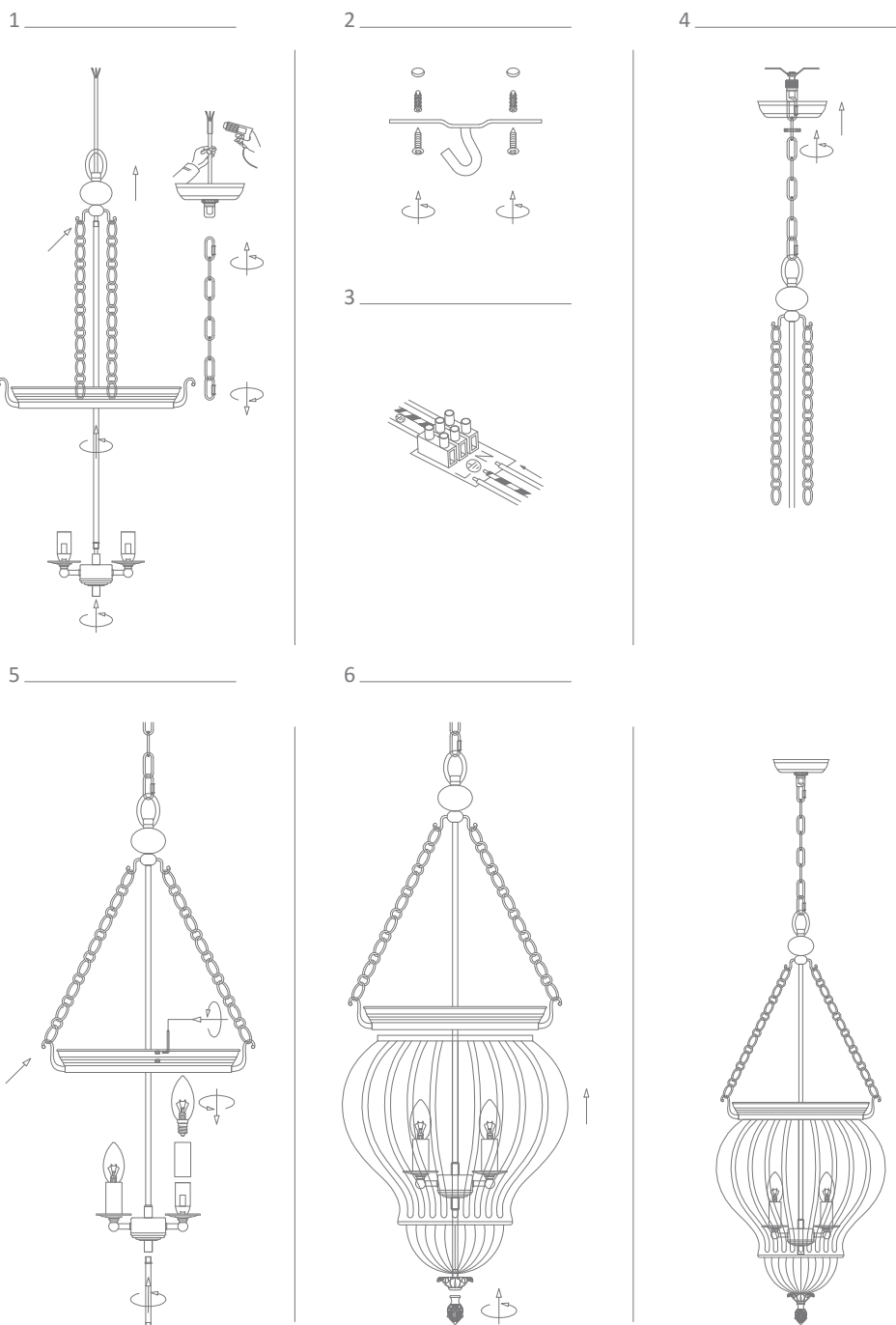
Order Code	Product Code	Description
31323	DIANA-LNTRN-BLK/CLR	E14 black/clear glass pendant

Thank you for purchasing your new DIANA pendant, Please take the time to read and understand the instruction sheet below. Failure to do so may void warranty.

Specifications

Voltage:	240V	Power:	Max 40W Incandescent, Max 20W CFL, Max 20W LED	IP Rating:	20
----------	------	--------	--	------------	----

Requires: E14 lamp, not included.



Note: -The lamp must be installed by professional electrician
 -Ensure the power supply is switched off before fitting this product

-Do not touch the lamp when in use
 -Keep away from hot steam and corrosive gas