

SMART LIGHTS

LED SMART GU10 GLOBE

SMTGU10 DIMMABLE TRI-CCT + RGB



NO HUB
REQUIRED



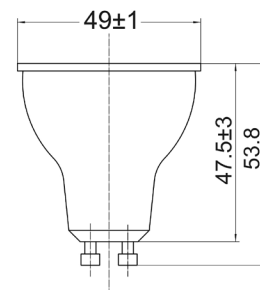
Technical Features:

- Input voltage range: 220-240V 50/60Hz
- Shade & diffuser: plastic
- LED chips: 20pcs SMD2835
- CRI: ≥80
- Power factor: 0.5
- Ambient temperature: -20 to 30°C
- App: control all functions via Tuya app on smart devices
- Manual: on/off control via normal wall switch
- Dimmable only via app or voice control through Amazon Alexa, Google Home and other compatible voice activated control devices (Not compatible with wall switch dimmer)
- Setup requires WiFi with Internet connection
- Suitable for 2-way switching
- Not suitable for use with sensors

20,000hr Lifetime	GU10	120° Beam Angle	DIMMABLE	IP20 Rated	2YEAR Replacement Warranty
----------------------	------	--------------------	----------	---------------	----------------------------------

Additional SMART Features:

- Tuneable RGB colour spectrum (up to 14 million colours)
- Tuneable colour temperature (3000K warm white through to 6500K daylight)
- Works with any 2.4GHz enabled WiFi network (note: will not currently pair with 5.0GHz bandwidth.) or Bluetooth LE 4.2
- Create schedules and timing to automate your home
- Control from anywhere via app or voice control using Alexa Hubs, Google Home and other compatible devices
- Compatible with all Tuya Powered apps



Scan QRCode to download

PART NO.	DESCRIPTION	BASE	KELVIN	LUMENS	WATT	PRODUCT DIMENSIONS	WEIGHT	BOX DIMENSIONS	CARTON QTY
SMTGU101	GLOBE LED SMART GU10 5W RGB TRI CCT	GU10	RGB+ 3000-6000K	360-450LM- 3000K 400-500LM- 4000K 400-500LM-6000K	5W	Ø50X53.8mm	0.02kg	6x5x6cm	1/10/100