

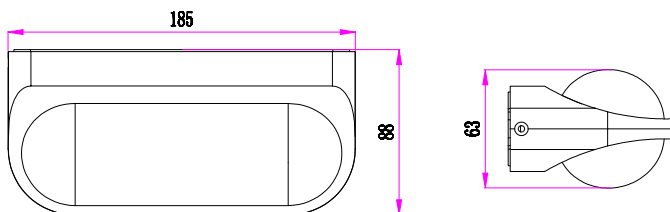
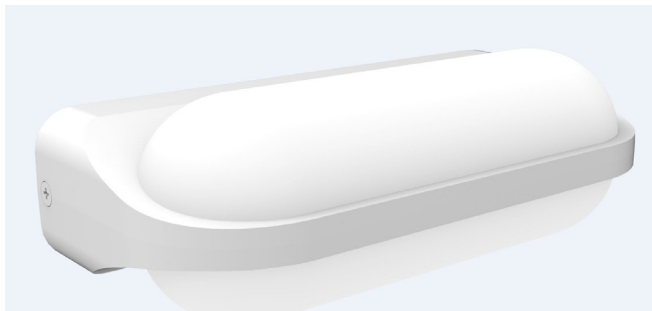
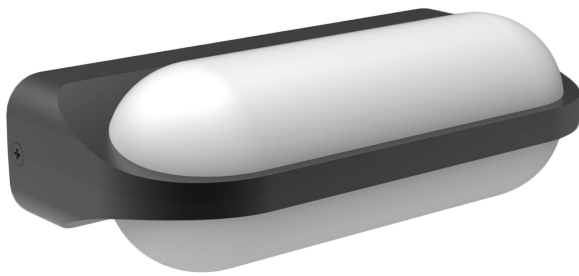
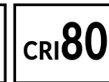
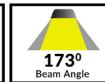
MARINA SERIES

Exterior LED Featured Wall Lights



Product Features:

- Input voltage: 100-240V AC 50/60Hz
- Driver output: 13.5-22V
- Driver input current: 0.034A
- Driver output current: 300mA
- Inrush current: 1.2A
- Housing: powder coated aluminium
- Diffuser: PC
- Bracket: PC
- LED chip: 6pcs 3030
- Power factor: >0.5
- Ambient Temp: -20 to 50°C
- Suitable for 2-way switching
- Suitable for use with PIR or Microwave sensors



Part No.	MARINA1
Colour	Powder coated dark grey
Kelvin	3000K
Lumens	380lm
Watt	7W
Weight	0.55kg
Box	20x11x8cm
Carton QTY	1/8

Part No.	MARINA2
Colour	Powder coated white
Kelvin	3000K
Lumens	380lm
Watt	7W
Weight	0.55kg
Box	20x11x8cm
Carton QTY	1/8



Back plate

UPDATED ON 06.09.2018

