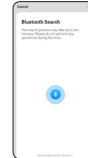


4. Select **'Switch (Bluetooth)'** or **'Switch (BLE)'** in the list of devices.

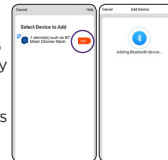


BrilliantSmart App will scan for the smart device.

**Do not perform any other operations during this time.**



5. Select the device to pair with the App by pressing **'Add'**.



BrilliantSmart App is now pairing with your device.

9

6. Your device is now paired with the App. Click on the 'pen' to change the name to one of your choosing. Press **'Done'**.



7. Your device is now ready to use. Select your device to take you to Control User Interface (UI) screen.



**For details on using the BrilliantSmart App or the dimmer, please see the Full Instructions on our website [www.brilliantsmart.com.au](http://www.brilliantsmart.com.au)**

10

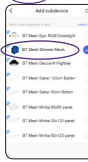
### Adding a Bluetooth Mesh Device to the Bluetooth Mesh Gateway (21439/05)

1. Ensure you have setup your Mesh Gateway and it is paired with your BrilliantSmart App.



2. Select the **'add device by list'** option if Bluetooth devices are already in the BrilliantSmart App (or search new device step 8).

3. When selecting **'add device by list'** all BrilliantSmart Bluetooth devices previously added will be listed.



4. Select the device(s) you want to link to the Mesh Gateway.

5. Select **'Immediately to join'**. Now the device(s) will be added to the Mesh Gateway.

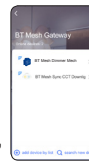


11

6. Select the **'add finish'** option to complete the device adding process.



7. Screen will show the added device(s).



8. Selecting **'search new device'** your Mesh Gateway will automatically search for any bluetooth mesh light devices.



9. For all other bluetooth mesh devices select from the list and follow BrilliantSmart App bluetooth pairing procedures.

10. If **'no devices found'**, add device separately (see step 2) **'add device by list'**.

12

### Warning

1. To prevent injury, this apparatus must be installed safely and correctly.
2. Do not open or tamper with smart device. Injury may occur.
- 3 Do not exceed rate loading.
4. For indoor use only. Not suitable outdoors.
5. Do not allow children to play with wall switch tuning ON/OFF rapidly. This can cause smart device to reset.
6. Power Surge/Power Loss could possibly reset smart device. If this happens follow setup instructions.

**NB: BrilliantSmart App screens may differ due to application updates & improvements.**

For any problems connecting your smart device to BrilliantSmart App please visit: [www.brilliantsmart.com.au/faqs](http://www.brilliantsmart.com.au/faqs)

13

### Warranty

Brilliant Lighting warrants this product against defects in manufacture and workmanship for a period of 12 months from date of purchase. Warranty does not include damage or loss arising from incorrect installation, operation or maintenance of this product, damage caused through modification, or incorrect installation. Our goods come with guarantees that cannot be excluded under the Australian Consumer Law. You are entitled to a replacement or refund for a major failure and compensation for any other reasonably foreseeable loss or damage. You are also entitled to have the goods repaired or replaced if goods fail to be of acceptable quality and the failure does not amount to a major failure. Any claim under this warranty must be made within 12 months of the date of purchase of the product. Refer to our website [brilliantlighting.com.au](http://brilliantlighting.com.au) for terms and conditions and warranty claims.

This warranty is given by:  
Brilliant Lighting (Aust) Pty. Ltd.  
ABN 37 006 203 694  
956 Stud Road Rowville, VIC 3178  
Phone: 03 9765 2555  
Email: [info@brilliantlighting.com.au](mailto:info@brilliantlighting.com.au)  
MADE IN CHINA

14

### Disposal

Please dispose of this packaging material thoughtfully.

Please dispose of this product thoughtfully once it has passed its useful life.

When your smart device comes to the end of its life or you choose to update or upgrade it, please do not dispose of it with your normal household waste. Please recycle where facilities exist.

When disposing of this fitting, check with your local authority for suitable options.

**Brilliant Lighting**  
956 Stud Road  
Rowville Vic 3178 Australia  
[www.brilliantlighting.com.au](http://www.brilliantlighting.com.au)

**Australian Sales**  
T 03 9765 2555  
T 1800 817 754 (interstate only)  
F 03 9763 0277  
E [warranty@brilliantlighting.com.au](mailto:warranty@brilliantlighting.com.au)

**New Zealand Sales**  
T 09 974 9618  
E [sales@brilliantlighting.co.nz](mailto:sales@brilliantlighting.co.nz)



15

**Brilliant SMART** Bluetooth Mesh Dimmer Mech 21666

**TRAILING EDGE DIMMER**  
Programmable minimum & maximum light levels

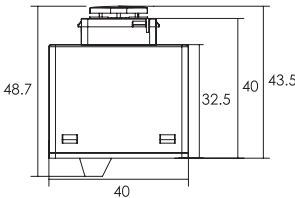


To connect to voice control or to control your devices remotely, you will need to purchase the Mesh Gateway (21439/05).



**QUICK START MANUAL**  
BLUETOOTH MESH NETWORK





## Technical Specifications

Model Number: 21666

- Max Load: 200W LED, 350W incandescent
- Min Load: 2W
- Trailing edge dimming
- Programmable minimum and maximum dimming levels
- Over heat protection & over current protection
- Warranty: 1 year

## Installation

**BEFORE INSTALLATION, PLEASE CHECK THAT THE LOCATION OF THE SMART DIMMER MECH IS WITHIN RANGE OF YOUR HOME WIFI AND THE SIGNAL IS STRONG.**

**MUST BE INSTALLED BY A LICENSED ELECTRICIAN.**

### IMPORTANT SAFETY ISSUES

Ensure the power is disconnected before installing. This product is NOT suitable for damp or explosive environments.

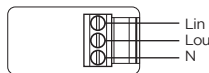
Modification of this product will void any warranty. Indoor use only. Do not cover in insulation.

The installation must follow AS/NZS 3000 wiring rules and building codes.

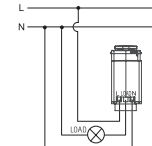
When drilling into walls and ceilings, care must be taken to ensure you do not damage electrical wiring and other hidden utilities.

- Disconnect power.
- Remove switch plate from the wall (if upgrading the existing wall plate).

- Connect the dimmer in accordance with the wiring diagram.



- For installations involving more than one dimmer on the switchplate, refer to the multi-gang de-rating instructions before commencing wiring.
- Refit switch plate to the wall.
- Reconnect power.



## MULTIGANG DE-RATING

When more than one dimmer is used on a common wallplate, their combined heat will affect their overall performance. Consequently, multiple dimmers must be de-rated.

Number of dimmers	Max. load per dimmer	
	Resistive	LED
1	350W	200W
2	250W	140W
3	200W	110W
4	150W	85W
5	120W	65W
6	100W	55W

## PROGRAMMING MINIMUM LIGHT LEVEL

The minimum dimming level can be raised to increase compatibility with a wide range of downlights under the settings menu of the smart dimmer. This can be saved and locked to prevent accidental changes.

Load type can also be selected to better match dimming characteristics to your light.

## SUGGESTED DOWNLIGHTS

This dimmer works with most LED dimmable downlights. If required you can raise the minimum dimming level to avoid any low level flickering due to differing driver designs.

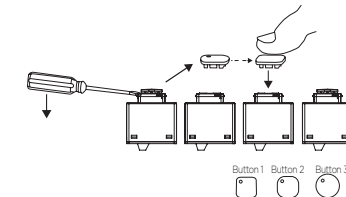
For reference the below downlights have been tested and found compatible under laboratory controlled conditions.

Brand	Downlight
BRILLIANT	20429 TRILOGY*
BRILLIANT	20204 UMBRA CCT
BRILLIANT	20203 LUXOR CCT
BRILLIANT	20454 MINI TRIM II
ATOM	AT9039/WH/TRI
LEDVANCE	SUPERSTAR
PHILIPS	DN029B2
PIERLITE	DLP63/4/65FWG2
SAL	ECOGEM S9041 TC*
SAL	WAVE S9065TC*
SAL	S9095TC/WH ROBO

\*Raise min to 28% for best performance

## REPLACE BUTTON CAP TO SUIT WALL PLATE

Remove button cap with screwdriver as shown below. Install new button cap onto mechanism by aligning correctly and pushing firmly until it clicks into place.



## SMART DIMMING

The smart dimmer works in sync with the BrilliantApp. Choose to control from either the physical button or the App in perfect sync.

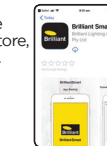
## Connect to your WiFi or 4G network

Ensure your mobile phone is connected to your 2.4GHz WiFi or 4G network.

Your mobile phone and your smart device needs to be within good signal strength range of your WiFi router or 4G network.

## Download the BrilliantSmart App

Please download the free BrilliantSmart App from the App store or Google Play store, or scan the QR code below.

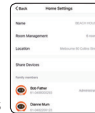


## Register the BrilliantSmart App

Open the BrilliantSmart app. For new users, register a new account or if existing user, login with your user name and password.

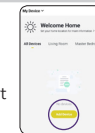
## Configure your BrilliantSmart App

You can setup multiple homes or locations. Click **'Add Home'** button. Or Click on **'Home'** top left if you are adding or modifying details then **'Home Management'** to setup your home(s), add or rename rooms and share devices.

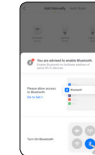


## Add your Smart Device to your App - Manual

1. Open the BrilliantSmart App, tap **'Add Device'** (if empty room) or **'+'** to add your Smart device.



2. On initial power-on, the smart device will begin blinking rapidly and be ready to pair (2 times per second). (If smart device does not automatically start blinking, quickly press the button 9 times, then it will begin blinking rapidly.)



3. Please ensure you have enabled Bluetooth before continuing.