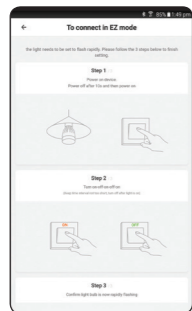


Using your BrilliantSmart App you can turn this device ON/OFF. See over for Voice Control.



8. If unsuccessful click 'How to make indicator rapidly blink' and follow the steps.

If still unsuccessful disconnect the Smart Device from the power outlet. Wait 20 seconds then follow previous connection setup.



### Multiple Devices

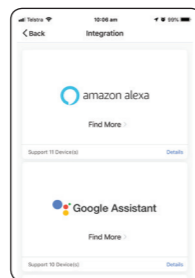
Connect one at a time via steps above. All other Smart WiFi RGB garden light kits must be turned OFF at the powerpoint.

Multiple units can be added at once but they then need to be identified once connected. This can be done by turning them off and on (via app) and renaming the device accordingly.

### Voice Control

To integrate with Amazon Alexa or Google Assistant devices open the BrilliantSmart app press 'Me' icon then 'More services'.

Click on Amazon Alexa or Google Assistant and follow the steps.

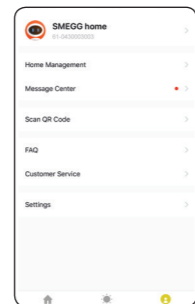


### BrilliantSmart App Assistance

For BrilliantSmart app assistance click Profile then FAQ. This should answer any queries you have.

If this doesn't solve your problem then click 'Customer Service', select 'New' and click on the device then type in your query.

You should receive a response within 24 hours.



For further troubleshooting or to connect via AP Mode go to [www.brilliantsmart.com.au](http://www.brilliantsmart.com.au).

### Other BrilliantSmart functions

#### Colour

This function allow the user to change the colour, brightness and temperature of the LED.

#### Scene

This function has eight (8) pre-set modes to choose from, to set a desired effect for the garden.

#### Timer & Schedule function

Click to set ON/OFF time that suits the user.

#### Manual Override

The smart device can be turned ON/OFF manually from the wall switch.

#### Memory

The smart device will remember what dimming levels and colours are selected when the device is turned off and on via app.

If mains power is disconnected this may reset the smart device dimming level back to 100%

#### Device Reset

If you need to reset your smart device, turn the power off, then on three (3) times. Colour will revert to red and blink rapidly. Follow setup instructions as required.

### Warranty

Brilliant Lighting warrants this product against defects in manufacture and workmanship for a period of 2 years from date of purchase. Warranty does not include damage or loss arising from incorrect installation, operation or maintenance of this product, damage caused through modification, or incorrect installation.

Our goods come with guarantees that cannot be excluded under the Australian Consumer Law. You are entitled to a replacement or refund for a major failure and compensation for any other reasonably foreseeable loss or damage. You are also entitled to have the goods repaired or replaced if goods fail to be of acceptable quality and the failure does not amount to a major failure.

Any claim under this warranty must be made within 2 years of the date of purchase of the product.

Refer to our website [brilliantlighting.com.au](http://brilliantlighting.com.au) for terms and conditions and warranty claims.

This warranty is given by:

Brilliant Lighting (Aust) Pty. Ltd.  
ABN 37 006 203 694  
956 Stud Road Rowville, VIC 3178  
Phone: 03 9765 2555  
Email: [warranty@brilliantlighting.com.au](mailto:warranty@brilliantlighting.com.au)

MADE IN CHINA

1893P 05/19 02

### Warning

1. Please use the device as per instructions.
2. To prevent injury DO NOT open or tamper with internals of this device
3. Transformer must be plugged into a weatherproof or indoor power outlet
4. Transformer specifications must be noted, as this will limit number of LED heads that can be used at all times.  
24W Power supply = 8 heads per unit  
36W Power supply = 12 heads per unit  
60W Power supply = 20 heads per unit
5. Do not allow children to play with wall switch turning ON/OFF rapidly. This can cause the smart device to reset.
6. Power surge/power loss could possibly reset smart device. If this happens follow setup instructions.

**Brilliant Lighting**  
956 Stud Road  
Rowville Vic 3178 Australia

[www.brilliantlighting.com.au](http://www.brilliantlighting.com.au)

#### Australian Sales

T 03 9765 2555  
T 1800 817 754 (interstate only)  
F 03 9763 0277  
E [sales@brilliantlighting.com.au](mailto:sales@brilliantlighting.com.au)

#### New Zealand Sales

T 09 974 9618  
E [sales@brilliantlighting.co.nz](mailto:sales@brilliantlighting.co.nz)



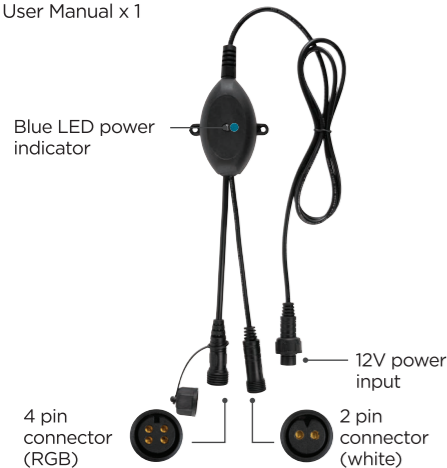
**WiFi Garden Light Controller**  
BOTANIC RGB LED Outdoor  
20701/06



**USER MANUAL**

## Box content

Smart WiFi Controller with 2 & 4 pin connector x 1  
User Manual x 1



## Technical Specifications

Model: 20701/06

Input Voltage: 12V 5A

Output: RGB and Single Light

Working Voltage: 12V DC

Water Resistant: IP68

Cable length: 1 metre

Dimensions: 80mm x 50mm

Construction classification: Class III

Warranty: 2 Years

Security: Mac Encryption; WEP/WAPI/TKIP/AES

WiFi Standard: IEEE802.11b/g/n

System Req's: iOS 8.0 or higher, Android 4.1 or higher

## Installation

Designed to be installed with the following products:

### Garden Kits

20702/06 WiFi Garden Light Kit Botanic RGB Led Outdoor

### Transformers

19915/06 2A/24W Transformer

19916/06 3A/36W Transformer

19917/06 5A/60W Transformer

### LED Lights

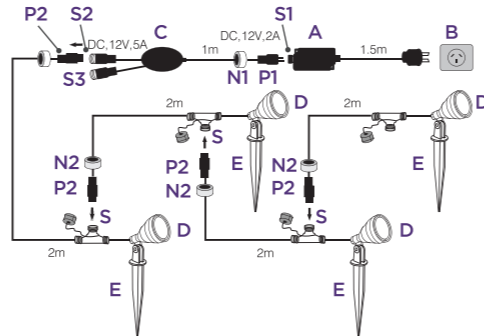
20703/06 12V/3W RGB Garden Light

### Caution

- If you are in any doubt as to the installation of this product, please consult a qualified electrical contractor before proceeding.
- This product works on 12V DC extra low voltage.
- Ensure total wattage of lights must not exceed the wattage of the transformer.
- There are no user serviceable parts within this kit.
- Care must be taken when attaching the controller onto surfaces so you do not damage electrical wiring and other hidden utilities that could cause injury to yourself.

Carefully unpack the WiFi controller and visually check the input 2 pin plug and output 4 pin RGB socket 'S2' are the same as original RF controller. 2 pin (single white) socket 'S3' is **not for RGB use**. For Garden kits with white globe use only.

Please dispose of the packaging thoughtfully.



- A. Transformer
- B. Power point
- C. Smart WiFi controller
- D. RGB LED head with 2m cable
- E. Plastic spike

- S. 4 pin head socket
- S1. 2 pin socket
- S2. 4 pin socket (RGB globes)
- S3. 2 pin socket (white globes)
- P1. 2 pin plug
- P2. 4 pin plug
- N1. Controller cable locking nut
- N2. Light cable locking nut

## Installation – WiFi Controller

1. Connect the 2 PIN Plug 'P1' of the WiFi Controller 'C' into 2 Pin Socket 'S1' Transformer 'A' and secure it with locking nut 'N1'. Ensure the connection is firm and secure.
  2. Position the Transformer 'A' near a convenient weatherproof or indoor power outlet 'B'.
  3. Position the WiFi Controller 'C' into a suitable shaded location ensuring that the LED indicator is facing upwards.
  4. Connect a RGB Garden light head 'D' 4 Pin Plug 'P2' into WiFi Controller 'C' 4 pin socket 'S2' and secure it with locking nut 'N2'.
  5. Place RGB Garden light in desired location taking care not to disturb hidden utilities when spiking into ground.
  6. Once happy with product installation, switch on Transformer at the power outlet and continue WiFi Controller setup with BrilliantSmart App.
- Transformers, lights and accessories not included.

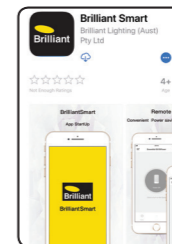
## Connect to your WiFi

Ensure your mobile phone is connected to your 2.4GHz WiFi network.

Your mobile phone and your smart device needs to be within good signal strength range of your WiFi router. (Refer to your router specifications for max range.)

## Download the BrilliantSmart App

Please download the free BrilliantSmart app from the App store or Google Play store, or scan the QR code below.



## Register the BrilliantSmart App

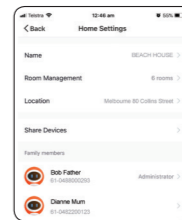
Open the BrilliantSmart app.

For new users, register a new account or if existing user, login with your user name and password.

## Configure your BrilliantSmart App

### Setting up your Home

You can setup multiple homes or locations. Click 'Add Home' button. Or click on 'Home' top left if you are adding or modifying details then 'Home Management' to setup your home(s), add or rename rooms and share devices.

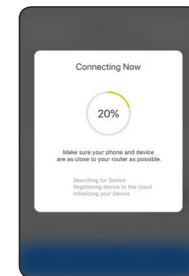
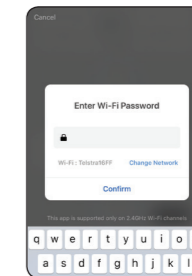
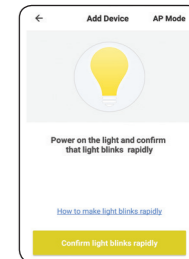


## Add your Smart Device to your App

Once you have connected the controller to the garden lights & transformer you can proceed.

1. Insert your smart WiFi device into a power point. When you power on, the smart garden lights come on. Turn the power switch OFF/ON at least 3 times till light heads and controller indicator light start to blink rapidly (2 times per second).

2. Open the BrilliantSmart App, tap 'Add Device' (if empty room) or '++' to add your Smart WiFi Device.
3. Select 'Lighting Devices' in the list of devices.
4. If device is blinking rapidly then press 'Confirm indicator rapidly blink.'
5. Enter your WiFi password.



Connection will now begin.

6. Once connected you'll get a menu 'Adding device succeeded'. Select the room device and press 'Done'.

You can click on the pen to change the device name.

7. The smart device can now be controlled by the BrilliantSmart app.

