

BOLT-SLIM-120

Specifications

Voltage:	240V AC	Lifespan:	50,000hrs	Dimmable:	No
Power:	20W/25W/35W/40W	Beam Angle:	120°	Operating Temp:	40°C
IP Rating:	IP44	CCT:	3000K - 4000K - 5700K	Power Factor:	0.11A
CRI:	≥80				

Lumen Output

	20W	25W	35W	40W
Warm White 3000K	2870lm	3580lm	4725lm	5445lm
Neutral White 4000K	3020lm	3830lm	5130lm	5830lm
White 5700K	3015lm	3795lm	5005lm	5625lm

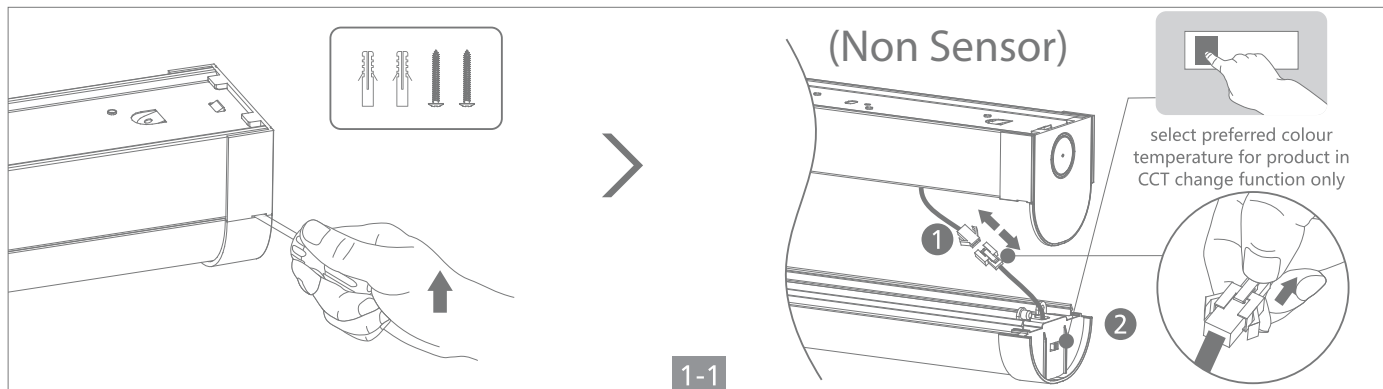
Safety Instructions:

1. Turn off power supply before installation or before doing any maintenance work.
2. Do not install any luminaire near the heat source.
3. Do not exceed the nominal supply voltage or amperage ratings.
4. All wiring and installation of the light fitting must adhere to local and national wiring rules.
5. Take care not to pull any electrical wires during unpacking as this may damage the connection.
6. Lay out all the components on a smooth surface and make sure there are no components missing before assembling.
7. To avoid injury or damage to the fitting, please ensure that power leads and screws are secure before connecting the power.
8. Please keep instructions for future reference.
9. Please refer to IP (Ingress Protection) rating of this luminaire when deciding the location of installation.
10. To achieve the best using effect, the battery should be charged and discharged every six months (for emergency products only)
11. The battery in this luminaire shall only be replaced by qualified agent.
12. Not suitable for functional safety as an emergency luminaire under the Australian Building Code

Installation Procedure:

1. Switch off before installation.
2. Switch on only after complete installation and examination of the circuit.
3. Professional electrician for installation and maintenance.

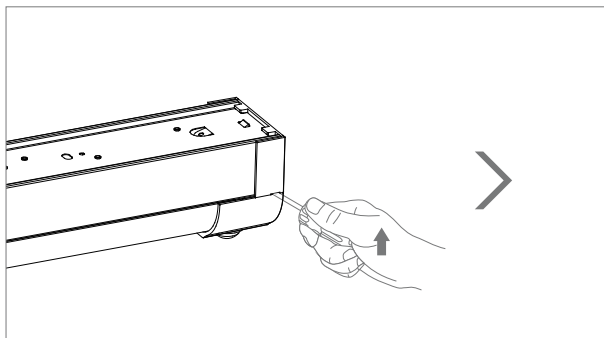
Turn off power supply before starting any installaion. Read instructions and check you have all the tools and accessories to complete the installation correctly.



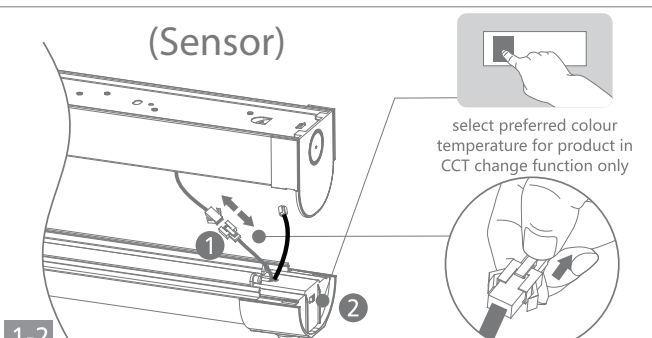
Note: -The lamp must be installed by professional electrician
-Ensure the power supply is switched off before fitting this product

-Do not touch the lamp when in use
-Keep away from hot steam and corrosive gas

Installation Manual

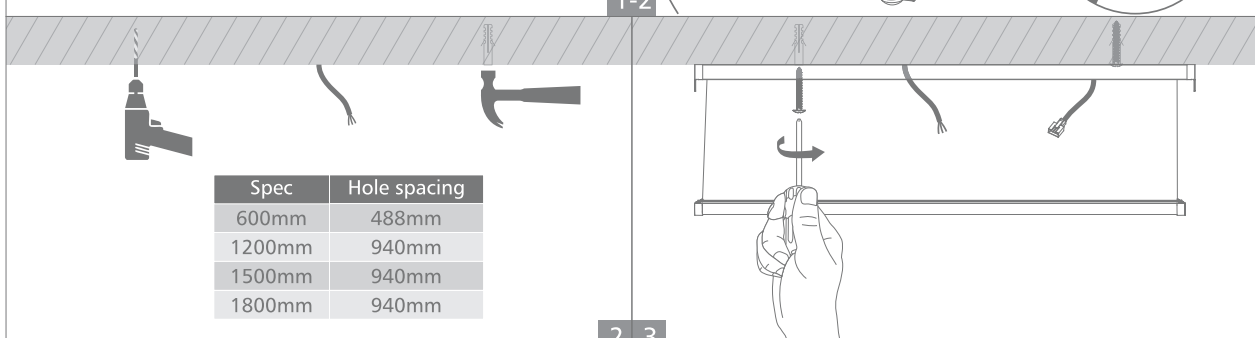


(Sensor)

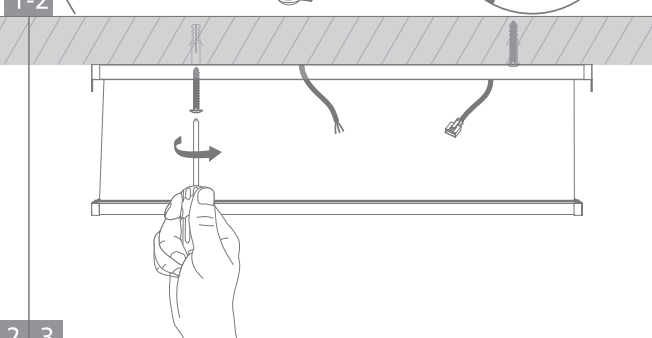


select preferred colour temperature for product in CCT change function only

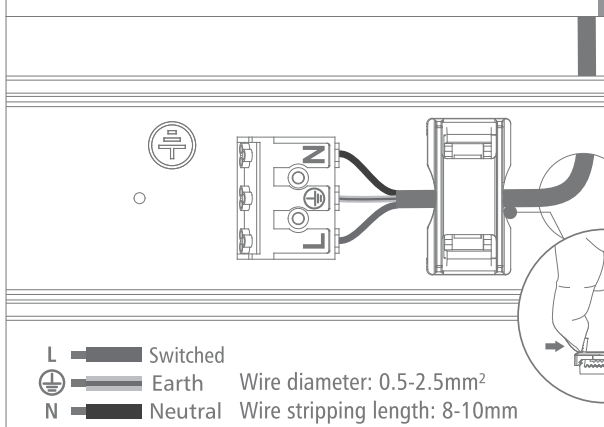
1-2



Spec	Hole spacing
600mm	488mm
1200mm	940mm
1500mm	940mm
1800mm	940mm



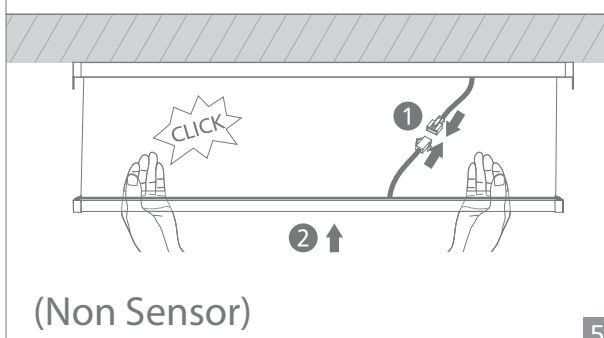
2 3



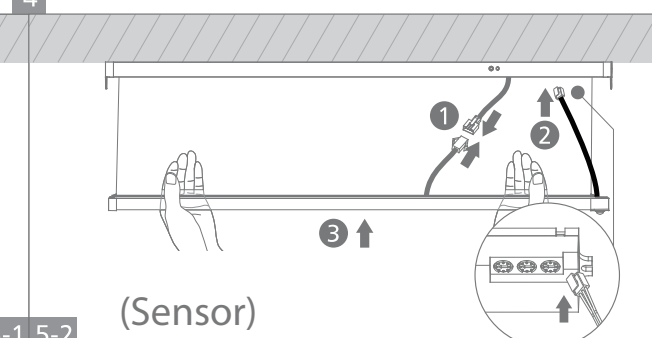
L — Switched
 ⊕ — Earth Wire diameter: 0.5-2.5mm²
 N — Neutral Wire stripping length: 8-10mm

Standard	Emergency	DALI
L = Switched ⊕ = Earth N = Neutral	L' = Switched L = Unswitched ⊕ = Earth N = Neutral	L = Switched N = Neutral ⊕ = Earth DA/L DA/N

4

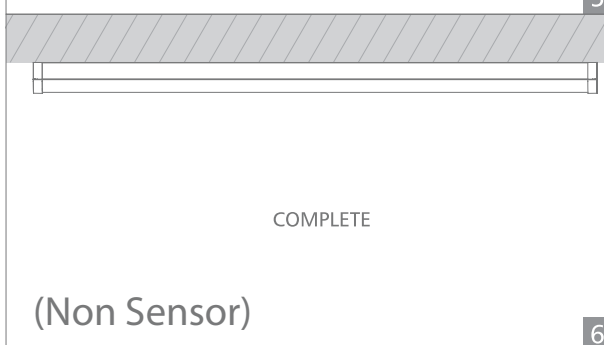


(Non Sensor)



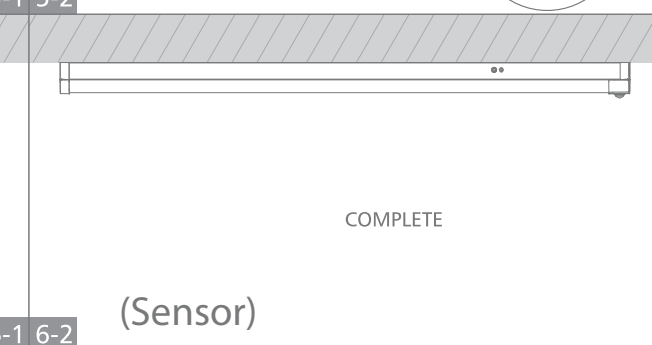
(Sensor)

5-1 5-2



COMPLETE

(Non Sensor)



COMPLETE

(Sensor)

6-1 6-2

Note: -The lamp must be installed by professional electrician
 -Ensure the power supply is switched off before fitting this product

-Do not touch the lamp when in use
 -Keep away from hot steam and corrosive gas