

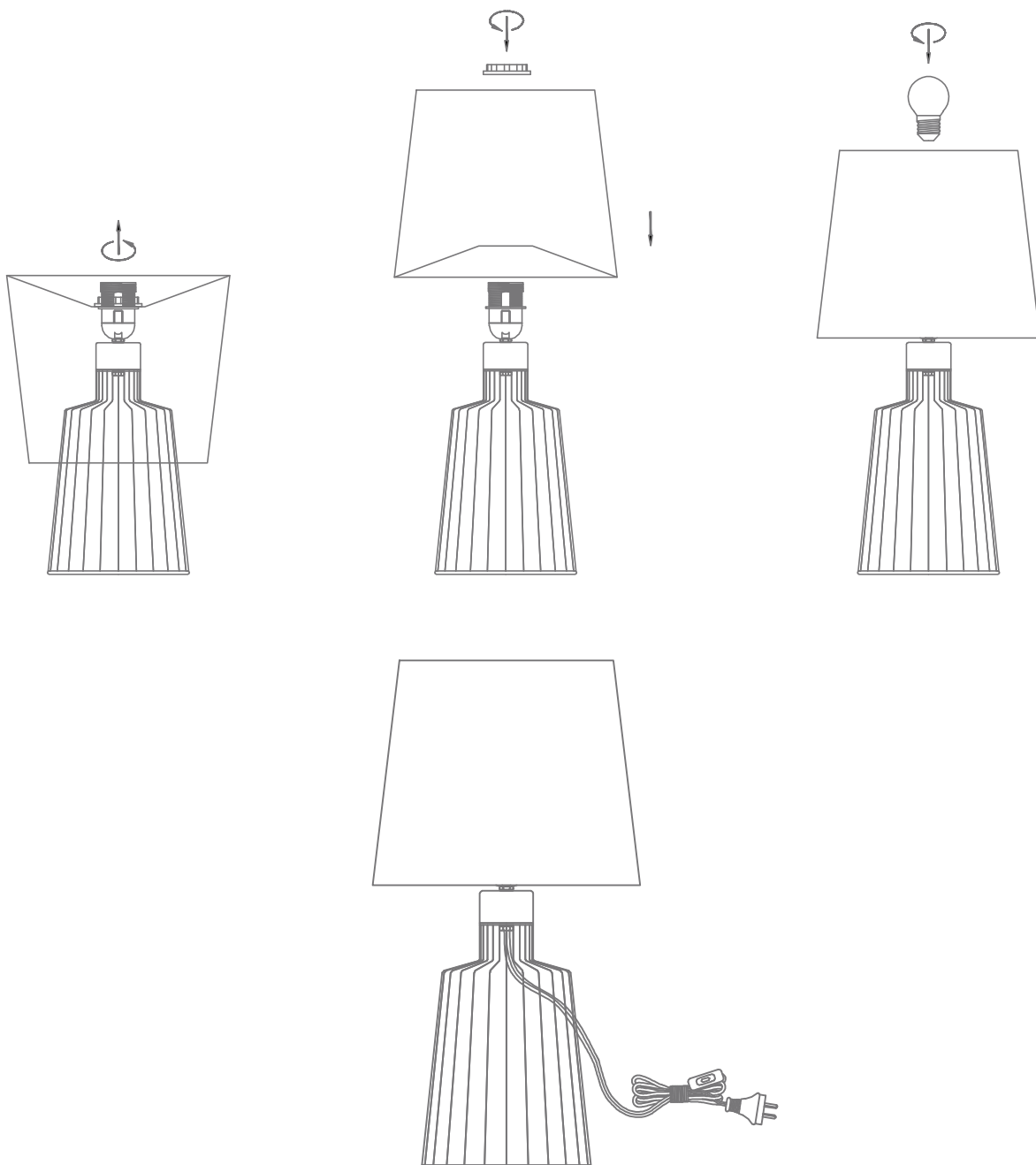
ASHLEY-TL

Variants	Item No.	Lamp Base
Blk	ASHLEY-TL-S	E27

Thank you for purchasing your new ASHLEY Table Lamp, Please take the time to read and understand the instruction sheet below. Failure to do so may void warranty.

Specifications

Voltage:	240V	Power:	60W Max	IP Rating:	20
----------	------	--------	---------	------------	----



Note: -The lamp must be installed by professional electrician
 -Ensure the power supply is switched off before fitting this product

-Do not touch the lamp when in use
 -Keep away from hot steam and corrosive gas

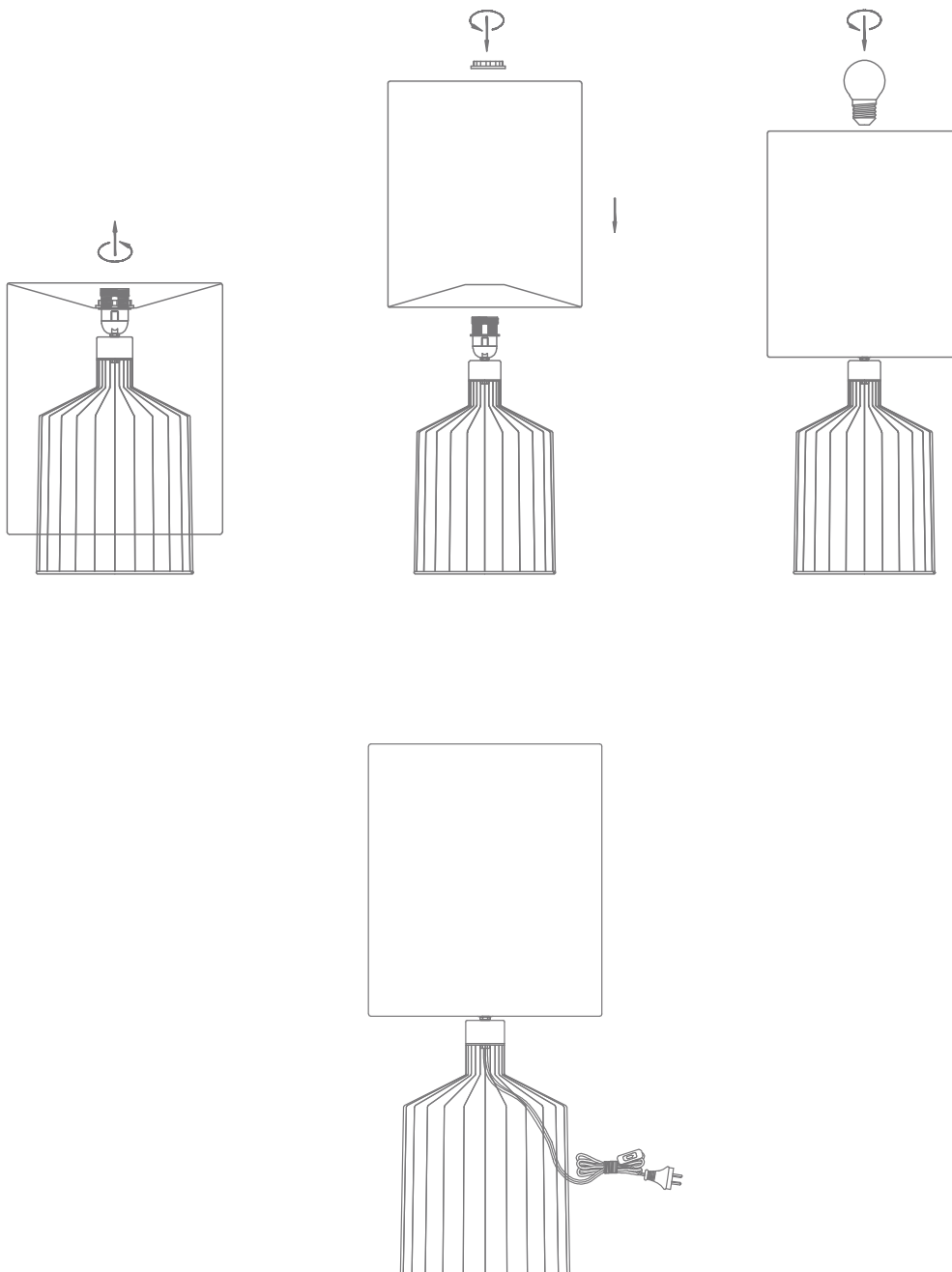
ASHLEY-TL

Variants	Item No.	Lamp Base
Blk	ASHLEY-TL-M	E27

Thank you for purchasing your new ASHLEY Table Lamp, Please take the time to read and understand the instruction sheet below. Failure to do so may void warranty.

Specifications

Voltage:	240V	Power:	60W Max	IP Rating:	20
----------	------	--------	---------	------------	----



Note: -The lamp must be installed by professional electrician
 -Ensure the power supply is switched off before fitting this product

-Do not touch the lamp when in use
 -Keep away from hot steam and corrosive gas

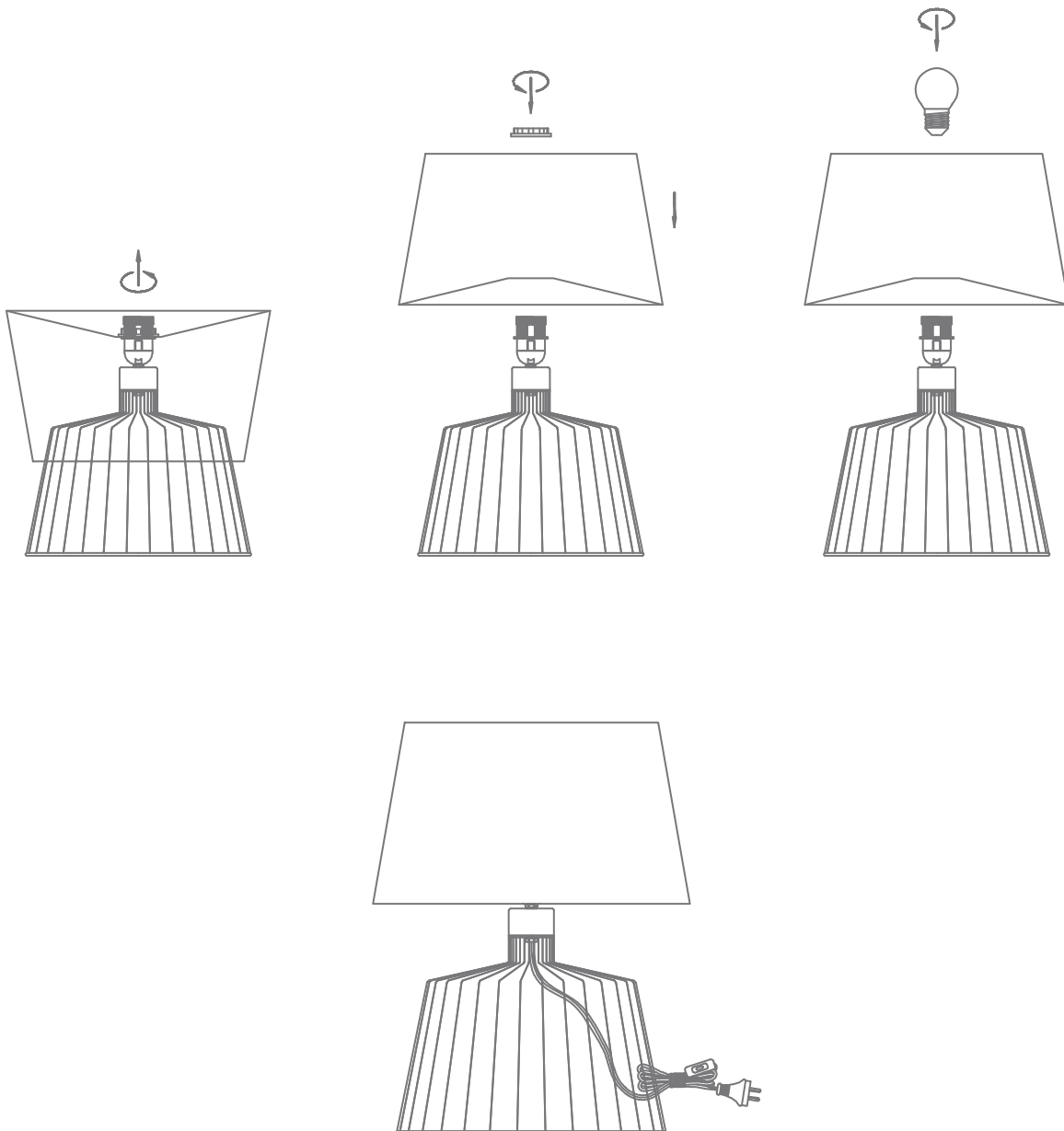
ASHLEY-TL

Variants	Item No.	Lamp Base
Blk	ASHLEY-TL-L	E27

Thank you for purchasing your new ASHLEY Table Lamp, Please take the time to read and understand the instruction sheet below. Failure to do so may void warranty.

Specifications

Voltage:	240V	Power:	60W Max	IP Rating:	20
----------	------	--------	---------	------------	----



Note: -The lamp must be installed by professional electrician
 -Ensure the power supply is switched off before fitting this product

-Do not touch the lamp when in use
 -Keep away from hot steam and corrosive gas