

ASHLEY-PDT

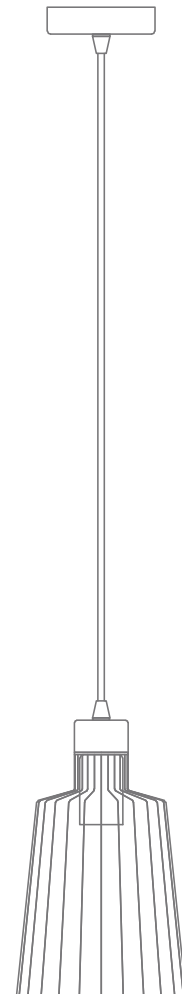
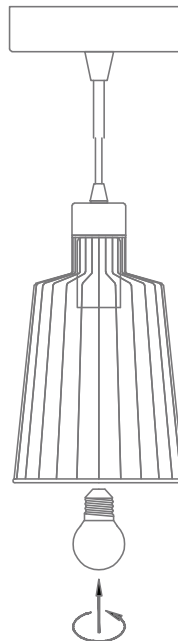
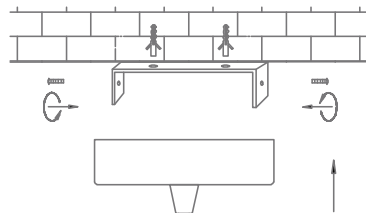
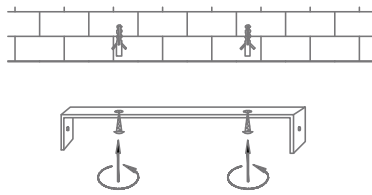
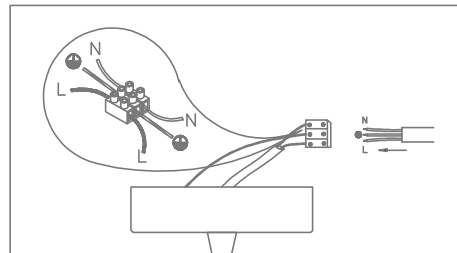
Date: 05/2022

Blk	Variants	Item No.	Lamp Base
22508		ASHLEY-PDT-S	E27

Thank you for purchasing your new ASHLEY Pendant Light, Please take the time to read and understand the instruction sheet below. Failure to do so may void warranty.

Specifications

Voltage:	240V	Power:	60W Max	IP Rating:	20
----------	------	--------	---------	------------	----



Note: -The lamp must be installed by professional electrician
-Ensure the power supply is switched off before fitting this product

-Do not touch the lamp when in use
-Keep away from hot steam and corrosive gas

ASHLEY-PDT

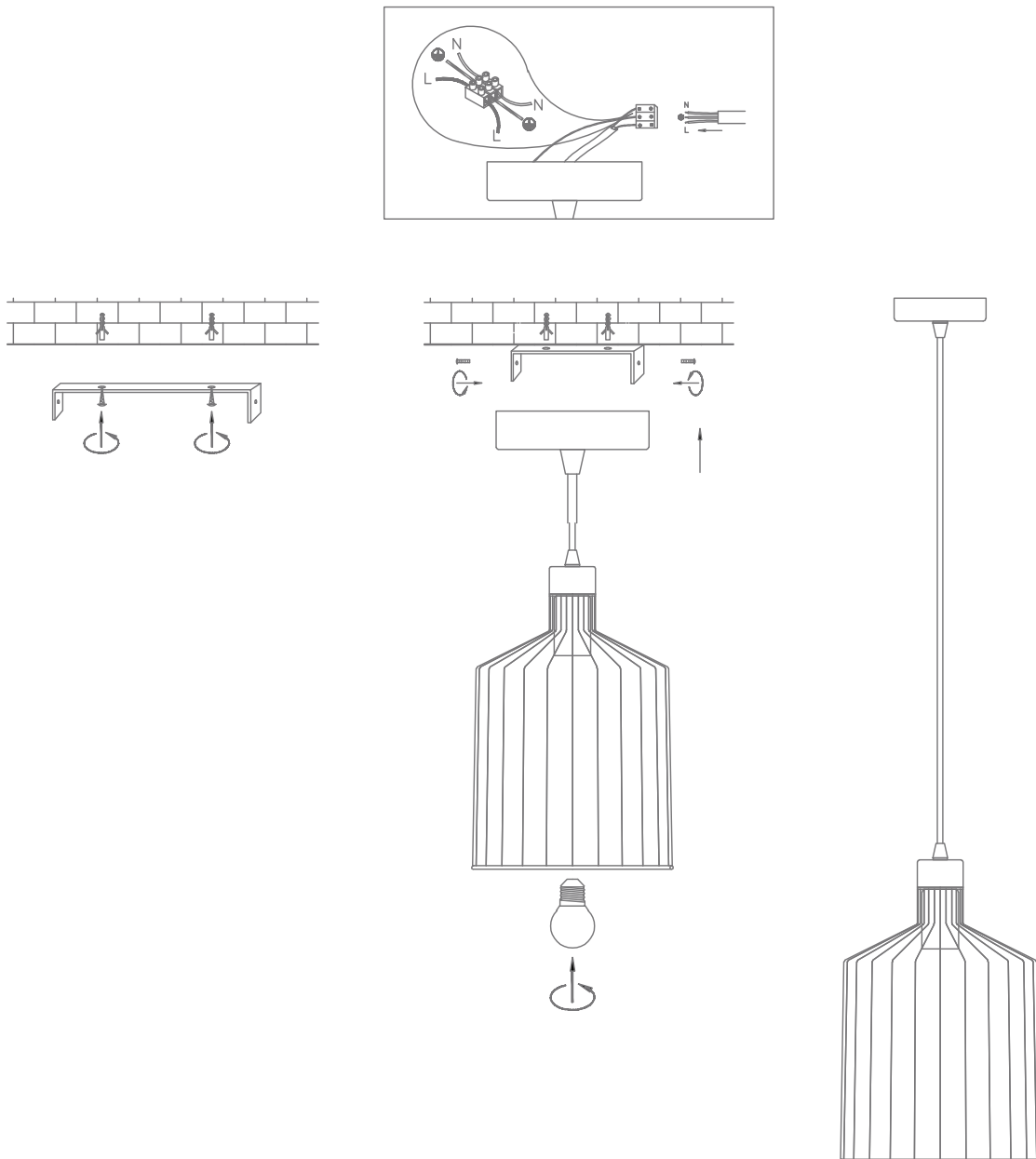
Date: 05/2022

Blk	Variants	Item No.	Lamp Base
22509		ASHLEY-PDT-M	E27

Thank you for purchasing your new ASHLEY Pendant Light, Please take the time to read and understand the instruction sheet below. Failure to do so may void warranty.

Specifications

Voltage:	240V	Power:	60W Max	IP Rating:	20
----------	------	--------	---------	------------	----



Note: -The lamp must be installed by professional electrician
 -Ensure the power supply is switched off before fitting this product

-Do not touch the lamp when in use
 -Keep away from hot steam and corrosive gas

ASHLEY-PDT

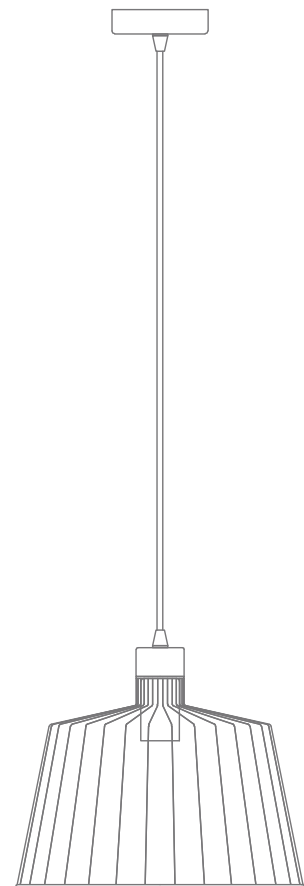
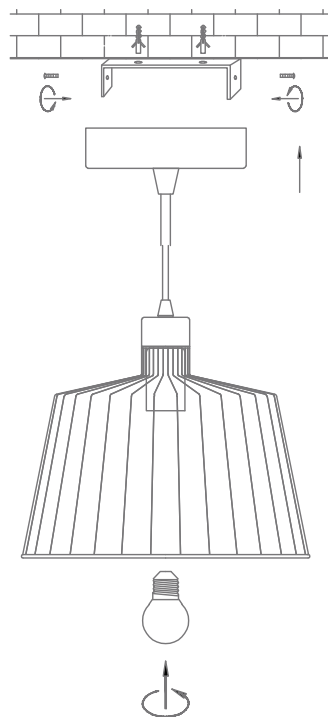
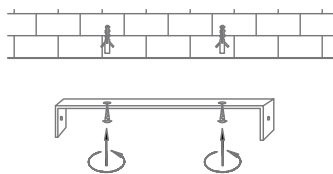
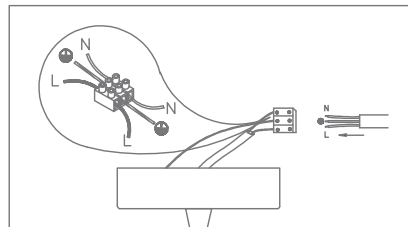
Date: 05/2022

Blk	Variants	Item No.	Lamp Base
22510		ASHLEY-PDT-L	E27

Thank you for purchasing your new ASHLEY Pendant Light, Please take the time to read and understand the instruction sheet below. Failure to do so may void warranty.

Specifications

Voltage:	240V	Power:	60W Max	IP Rating:	20
----------	------	--------	---------	------------	----



Note: -The lamp must be installed by professional electrician
-Ensure the power supply is switched off before fitting this product

-Do not touch the lamp when in use
-Keep away from hot steam and corrosive gas